

6252 WEST 104TH AVENUE WESTMINSTER, CO 80020 303-469-5441 WWW.BUTTERFLIES.ORG



**Recycled**

Supporting responsible use  
of forest resources

[www.fsc.org](http://www.fsc.org) Cert no. SW-COC-002387  
© 1996 Forest Stewardship Council



BUTTERFLY PAVILION



## OUR VISION

The vision of the Butterfly Pavilion is to be the premier invertebrate education center in the nation.

## OUR MISSION

The Butterfly Pavilion exists to foster an appreciation of butterflies and other invertebrates while educating the public about the need for conservation of threatened habitats in the tropics and around the world.

## CORE VALUES

**Education** – We will share our passion for the natural world by providing the very best instruction and services to a diverse public. We seek to promote curiosity and discovery among our patrons, from toddlers to seniors.

**Environment** – We will teach stewardship, conservation and embrace sustainability and diversity locally and globally.

**Inquiry** – We will seek creativity, rigorous inquiry, analysis, documentation, and communication as we become a premier research center to explore the science of butterflies and other invertebrates.

**Service** – We are ever mindful that we exist to serve the community. We will honor and respect the differences of those we serve and covet the confidence and trust of our patrons.

**Leadership** – We will seek excellence in decision-making and fiscal responsibility, being bright and thoughtful about solutions to problems. We will constantly assess our policies and programs.

**Integrity** – We, the leadership, Board of Directors and the staff of the Butterfly Pavilion, will hold ourselves to the highest ethical and moral standard.

**Pride** – We will foster a sense of pride in our institution and will always thoughtfully pursue ways to promote growth, sustainability and improvement of the Butterfly Pavilion.



## DEAR MEMBERS AND FRIENDS

- Your support, the expertise and dedication of the Pavilion's staff, the extraordinarily talented cadre of committed volunteers and the leadership of the Pavilion's Board of Directors shepherded the Pavilion through a challenging year. The 2008-audited fiscal year closed with a net increase in cash and cash equivalents of \$208,318.00. The Pavilion experienced an increase in visitations by members, by patrons and most significantly, by school children. 2008 was an unprecedented year in providing education to 56,585 school children both in the classroom and through outreach. The education focus of the Pavilion was sustainability and environmental conservation through the study of invertebrates.
- More exotic species of butterflies punctuated our tropical rainforest with their dazzling colors than ever before. The USDA (Regulator of imports and containment) increased the number of permitted species, which allowed the public to be inspired, excited, educated and enlightened. The purchase of butterfly chrysalides is a worldwide enterprise. The countries of origin truly circumscribe the globe. This is important, not only for the wonders it brings to our visitors, but also for the preservation of environments and the uplifting of people in emerging economies. The Pavilion purchases only from butterfly farms, which makes the rainforest and other habitats a resource of economic value thus discouraging the slash and burn practice of subsistence farming. We are fulfilling our mission locally and globally – for this you should be very proud. We uplift hopes and lives on the wings of butterflies.
- The Pavilion is much more than butterflies. Those aerial gems that bring delight teach us the marvels of diversity in nature and society. The magic of their lifecycle illustrates how all life is change, and their very existence paints a tableau of a healthy environment through the deft hand of our stewardship. Invertebrates are responsible for the bounty given up by the land and the world's vast seas. The enormous blue whale, some 100 feet in length and 150 tons in weight survives by ingesting thousands of pounds of invertebrates called krill. The human table relies on a variety of invertebrates to fill its plates with food. The invertebrate: the beetle, the spider, the shrimp, the sponge, the honeybee, and the butterfly, to name but a few, is the epitome of biodiversity – the underpinning of all life.
- As a not for profit educational institution we urge you to support our essential education programs and our worldwide endeavors. Your generosity brings positive change to our environment through education, first by baby steps, then by giant strides. Help us celebrate another successful year through the continued support of the Butterfly Pavilion's mission. Together let's build a future for our posterity.

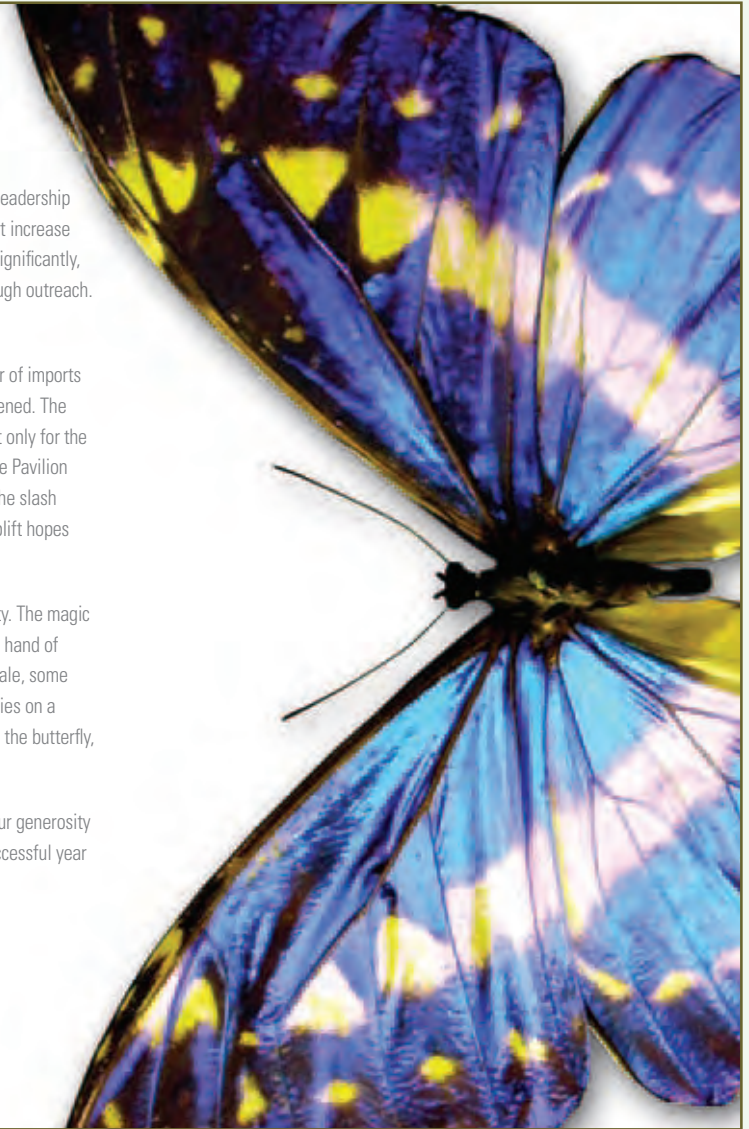
Sincerely,



Robert J. Bonacci  
President/CEO



Bill West  
Board of Director's Chair



## FUN FACT

*The Butterfly Pavilion was the first freestanding butterfly house and invertebrate zoo in the United States, and in its first year served over 200,000 visitors!*



## WE LOVE TO TEACH AND LEARN

Education lies at the core of the Butterfly Pavilion's mission. Youth Education, Lifelong Learning and Volunteer Departments play a vital role in enlightening students and residents of the SCFD and the broader community about the importance of invertebrates and the conservation of global habitat. Highlights include the following:

### YOUTH EDUCATION

■ The Butterfly Pavilion Education Department continued to expand its conservation education efforts in the community. The Pavilion served over 36,225 students through on-site classes during the 2007/ 2008 school year.

■ The Butterfly Pavilion continued to successfully meet the curricular needs of the Colorado school systems. The Pavilion provides Colorado content standards-based education that provides hands-on, immersion-oriented learning that stimulates creativity and imagination.

■ Youth outreach programming continued to be one of the Pavilion's fastest growing programs in 2008. Teaming with Colorado libraries, the number of programs doubled providing 630 programs serving over 20,360 students!

■ The Education Department continues to strive to meet the growing need of underserved students with assistance for classes, visits and transportation. The Pavilion was able to assist over 3,300 underserved, low-income and title-one students from 62 schools from the Denver metropolitan area.

■ Youth education also set the stage for a much larger impact in 2009 by developing a number of collaborative relationships including investment opportunities for corporations and foundations.

■ The Pavilion continues to expand its collaboration with the Children's Museum of Denver and Denver Public and Adams-12 School districts through the G.R.O.W. Program. In its 5th year, this highly successful program continues to improve science and literacy of underserved Denver area urban youth.



## LIFELONG LEARNING

The Lifelong Learning Department expanded its efforts encouraging daily visitor programs and extracurricular learning opportunities.

■ Bug Talk (classroom-based) free visitor programs succeeded in 2008 by providing an extensive educational resource to over 3,684 visitors in 199 groups! Some of the highlights included weekly children's story time, Monarch migration, and garden bug hunts.

■ The adult and senior education program provided 90 classes serving nearly 1,100 visitors and Senior Outreach programs served over 1,400 active adults.

■ Adult workshops continued to grow a great deal in 2008. Tripod Photography held 13 sessions serving 113 amateur photographers.

■ Collaborating with Colorado School of Mines, teacher enrichment workshops trained regional educators on techniques of implementing much needed standards-based inter-disciplinary invertebrate conservation curriculum in their classrooms.

## VOLUNTEER PROGRAMS

Volunteers continue to be the life-blood of the Pavilion and an incredible benefit to the community. The Pavilion continues to make strides in refinement and expansion of volunteer training to provide new opportunities for volunteers to expand their interests and contributions.

■ In 2008, The Butterfly Pavilion offered 29 different training opportunities with an average class size of six. Volunteers range in age, interests, vocations, and talents. They continue to provide needed services.

■ Over 125 volunteers provided over 9,022 hours at a value of \$153,645.00!



## CURATORIAL

Butterflies and other invertebrates are the zoological masterpieces of nature that form the core of the Butterfly Pavilion's full-immersion experiential education program. Thousands of animals are cared for by the curatorial staff, a group of superb scientists who apply their knowledge, skills and abilities to the maintenance of our collection. Highlights include the following:

- Unique to the Denver area zoological education experiences, the Butterfly Pavilion's zookeepers provide in-depth, hands-on education for all age visitors. The Curatorial team presented 734 educational butterfly releases to the public twice a day throughout the year.
- In 2008, 46,919 butterfly and moth pupae were imported to the Butterfly Pavilion from butterfly farmers around the globe. An average of 1,200 butterflies flew each day!

## TESTIMONIAL

- Over the years as a first grade teacher, I have witnessed the positive impact that the Butterfly Pavilion has had on my students and their families. Each week our class chooses one student to be the "Special Person" for the week. That child decorates a poster with pictures of themselves and the things that are important to them. The pictures are usually of birthday parties, family members and important days in their lives. They love to show of places they have traveled to, sports that they can play, people that they have met and even baby pictures!

A few years ago, I realized that while no two posters are ever alike, I noticed the same picture over and over again on poster after poster. That picture is always the student holding out his/her hands, carefully showing off a furry tarantula. Every time the picture appears, the class suddenly fills with stories from all of the students sharing their experience with Rosie at the Butterfly Pavilion. Out of all of the experiences that a six year old can have, holding Rosie at the Butterfly Pavilion always tops the list.

Melissa Houlihan, 1<sup>st</sup> Grade Teacher at Meiklejohn Elementary



## HORTICULTURE

As wildlands shrink, gardens can provide necessary resources for many species of invertebrates. In 2008, the Horticulture Department continued to pursue its philosophy of bringing plants, people, and wildlife together. Whether by teaching kids to build their own miniature rain forest or by encouraging gardeners to appreciate beneficial insects, our horticulture staff and volunteers contributed time, hard work, and expertise to the cause of habitat gardening.

- In 2008, three senior resident facilities – The Retreat at Church Ranch, Englewood Meridian, and Wynwood at Ridgepoint in Boulder – participated in Butterfly Pavilion’s Senior Habitat Gardening Program. Horticulture staff and volunteers, with the help of resident seniors, planted a habitat garden with butterfly-attracting annuals and perennials. The program creates butterfly habitats throughout the Denver metro area, while providing local seniors educational and therapeutic opportunities.
- The Horticulture Department taught three successful family workshops in 2008. With topics ranging from carnivorous plants to butterfly gardening, to growing plants from kitchen scraps, families were able to develop green thumbs and learn about science in an immersive, hands-on environment. Horticulture education, which also includes garden club talks, tours, workshops, and the Discovery Garden Series, is an increasingly important goal of the department.
- Horticulture staff and teen volunteers counted, observed, and recorded the diversity of invertebrates in the Butterfly Pavilion’s outdoor plant collections throughout 2008. The census found that the Butterfly Pavilion’s gardens support eleven bee species and twelve butterfly and skipper species, and the gardens provide food and shelter from early May to late October. Data collectors also assisted with the Floral Preference study. By learning which plants are most attractive to butterflies, environments can be tailored according to season, species diversity, and populations. Information from these studies has been shared with other butterfly houses and zoos around the county.
- In fall 2008, the Butterfly Pavilion with the assistance of HPE finished the re-piping of the conservatory heating system. The repairs prevented plant loss due to underground hot water leaks, and sustained the tropical environment, even on the coldest winter days. The pipes transporting hot water from the boilers are all now above ground, insulated, and covered with plastic covers.

### FUN FACT

*Arthropods have exoskeletons, segmented bodies, and are cold blooded! Arthropods are part of the invertebrate world. Invertebrates make up 97% of the all animal species on the planet!*





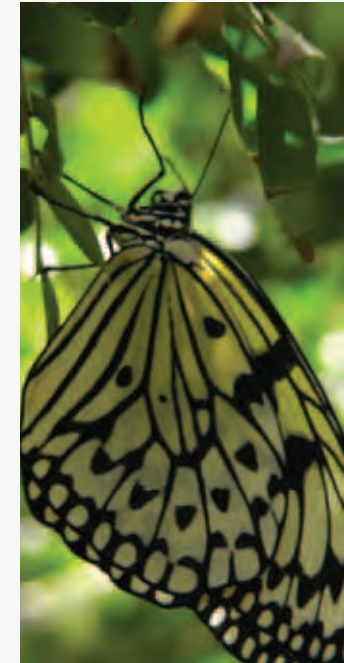
## FUN FACT

*Recycling helps reduce greenhouse gas emissions. Every ton of recycled mixed paper can save the energy equivalent of 185 gallons of oil.*

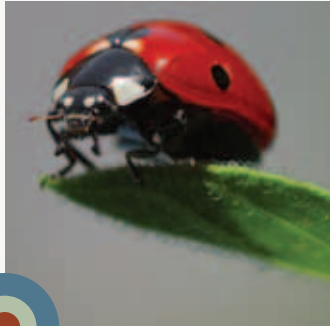


### ROCKY MOUNTAIN BUTTERFLY CONSORTIUM STATEMENT OF FINANCIAL POSITION DECEMBER 31, 2008 (WITH COMPARATIVE TOTALS FOR 2007)

	2007	2008
<b>Assets</b>		
Cash and cash equivalents – unrestricted	\$ 585,847	\$ 379,273
Cash and cash equivalents – temporarily restricted	18,011	16,267
Accounts receivable	924	7,485
Gift shop inventory	204,938	219,873
Investments	253,346	103,147
Net property and equipment	4,329,461	4,477,819
Amortized bond issuance costs	17,003	29,692
Beneficial interest in assets held by others	35,425	33,692
<b>Total Assets</b>	<b>\$ 5,444,955</b>	<b>\$ 5,267,460</b>
<b>Liabilities and Net Assets</b>		
<b>Liabilities</b>		
Accounts payable	\$ 83,976	\$ 29,450
Accrued payroll costs	58,665	47,473
Deferred memberships	67,124	76,873
Loan payable	5,108	-
Bonds payable	\$ 1,615,000	\$ 1,615,000
<b>Total Liabilities</b>	<b>\$ 1,829,873</b>	<b>\$ 1,768,796</b>
<b>Net Assets</b>		
Unrestricted		
Operating	\$ 857,862	\$ 589,720
Net investment in fixed assets	2,709,351	2,862,819
Temporarily restricted	18,011	16,267
Permanently restricted	29,858	29,858
<b>Total Net Assets</b>	<b>\$ 3,615,082</b>	<b>\$ 3,498,664</b>
<b>Total Liabilities and Net Assets</b>	<b>\$ 5,444,955</b>	<b>\$ 5,267,460</b>



ROCKY MOUNTAIN BUTTERFLY CONSORTIUM STATEMENT OF ACTIVITIES FOR  
THE YEAR ENDED DECEMBER 31, 2008 (WITH COMPARATIVE TOTALS FOR 2007)



				2007	2008
	Unrestricted	Temporarily Restricted	Permanently Restricted	Total	Total
<b>Revenue and Other Support</b>					
Admissions	\$ 1,106,768	\$ -	\$ -	\$ 1,106,768	\$ 1,044,838
Museum store revenue/concessions	665,534	-	-	665,534	636,490
SCFD	577,064	29,911	-	606,975	565,503
Program fees	195,089	-	-	195,089	184,889
Memberships	124,802	-	-	124,802	149,356
Donations	53,873	29,888	-	83,761	149,764
Investment income	10,694	-	-	10,694	17,883
Other	17,774	-	-	17,774	6,952
In-kind	-	-	-	-	-
Net assets released from restrictions	58,055	(58,055)	-	-	-
<b>Total Revenue and Other Support</b>	<b>\$ 2,809,653</b>	<b>\$ 1,744</b>	<b>-</b>	<b>\$ 2,811,397</b>	<b>\$ 2,755,675</b>
<b>Expenses</b>					
Program Services					
Admissions/museum store	\$ 696,579	-	-	\$ 696,579	\$ 697,056
Education exhibits/programs	550,588	-	-	550,588	408,034
Curatorial and invertebrate science	459,031	-	-	459,031	418,486
Pavilion facility operations	253,463	-	-	253,463	290,571
Horticulture	178,959	-	-	178,959	180,615
Pavilion volunteer support	51,996	-	-	51,996	69,494
<b>Total Program Services</b>	<b>\$ 2,190,616</b>	<b>-</b>	<b>-</b>	<b>\$ 2,190,616</b>	<b>\$ 2,064,256</b>
Supporting Services					
Administration	\$ 259,676	-	-	\$ 259,676	\$ 295,334
Marketing, promotion & members	229,561	-	-	229,561	207,134
Fund raising	15,126	-	-	15,126	14,856
<b>Total Supporting Services</b>	<b>504,363</b>	<b>-</b>	<b>-</b>	<b>504,363</b>	<b>517,324</b>
<b>Total Expenses</b>	<b>\$ 2,694,979</b>	<b>-</b>	<b>-</b>	<b>\$ 2,694,979</b>	<b>\$ 2,581,580</b>
Change in net assets	\$ 114,674	\$ 1,744	-	\$ 116,418	\$ 174,095
<b>Net Assets, beginning of year</b>	<b>3,452,539</b>	<b>16,267</b>	<b>29,858</b>	<b>3,498,664</b>	<b>3,324,569</b>
<b>Net Assets, end of year</b>	<b>\$ 3,567,213</b>	<b>\$ 18,011</b>	<b>\$ 29,858</b>	<b>\$ 3,615,082</b>	<b>\$ 3,498,664</b>

## FUN FACT

*The conservatory houses over 300 tropical and sub-tropical plants providing exotic blooms and nectar sources for the 1,200 free-flying butterflies.*



## STAFF

The Butterfly Pavilion is a multi-faceted educational institution, and its operations require the efforts of a talented, passionate, and dedicated staff. Their commitment to the mission and vision of our organization bring life and vitality to our programs.

Jaime Bain  
*Zookeeper*

Joseph Barry  
*Gardener*

Lindsey Barton  
*Sales Associate*

Nicole Bickford  
*Education Specialist*

Heather Bilek  
*Sales Associate*

Jesse Boerema  
*Custodian*

Robert Bonacci  
*President/CEO*

Mary Broughall  
*Temp. Adult/Volunteer Coordinator*

Deborah Brooks  
*Educator*

Vernon Collins  
*Senior Outreach Presenter*

Anastasia David  
*Supervisor – Gift Shop*

Joann Dawe  
*Adult Outreach Instructor  
& Youth Outreach Instructor*

Bryan Dee  
*Marketing Intern/Event Assistant*

Justin Deines  
*Operations Supervisor*

Jenifer Doane  
*Marketing Director*

Amanda Douglass  
*Special Events Coordinator/Sales*

David Ennis  
*Outreach Presenter*

Kathryn Erbaugh  
*Sales Associate*

Sara Farmer  
*Birthday Party Ambassador*

Carissa Fisher  
*Zookeeper*

Mary Ann Hamilton  
*Curatorial Manager*

Lisa Hettinger  
*Sales Associate*

Kyle Hettema  
*Zookeeper*

Jennifer Hink  
*Assistant Manager-Gift Shop*

Stephanie Hollister  
*Zookeeper*

Scott Johnson  
*Custodian*

Moira Jones  
*Birthday Party Ambassador*

Cynthia Killingbeck  
*Director of Admissions & Retail*

Megan Lanning  
*Outreach Presenter*

Marilyn Love  
*Sales Associate*

Kendra Lubchenco  
*Administrative Assistant*

Michele Melio  
*Outreach Presenter*

Michele Morenz  
*Educator*

Betina Moody  
*Sales Associate*

Kelley Nieser  
*Sales Associate*



## STAFF continued

Sabrina Orlando  
*Membership/Donor Relations  
Manager*

Theresa Paiva  
*Outreach Presenter*

Deanna Pierce  
*Supervisor – Gift Shop*

Kristen Pohl  
*Volunteer Coordinator and Adult  
Education Specialist*

Denise Price  
*Outreach/Off-site Coordinator*

Lois Rosenquist  
*Zookeeper*

Jody Ruch  
*Sales Associate*

Stephanie Sisroy  
*Special Events Assistant*

Christina Sisler  
*Sales Associate*

Marcos Stoltzfuls  
*Youth Programs Coordinator*

Jennifer Strotman  
*Zookeeper*

Emily Stuckey  
*Outreach Presenter and Educator*

Charlotte Swatek  
*Birthday Party Coordinator*

Patrick Tennyson  
*Deputy CEO*

Jane Toman  
*Zookeeper*

John Tyler  
*Zookeeper*

Karen Vitco  
*Zookeeper*

Suzanne Weltzer  
*Birthday Party Ambassador*

Khanh Whiteman  
*Zookeeper*

Jessica Wilson  
*Full-charge Bookkeeper*

Amy Yarger  
*Director of Horticulture*

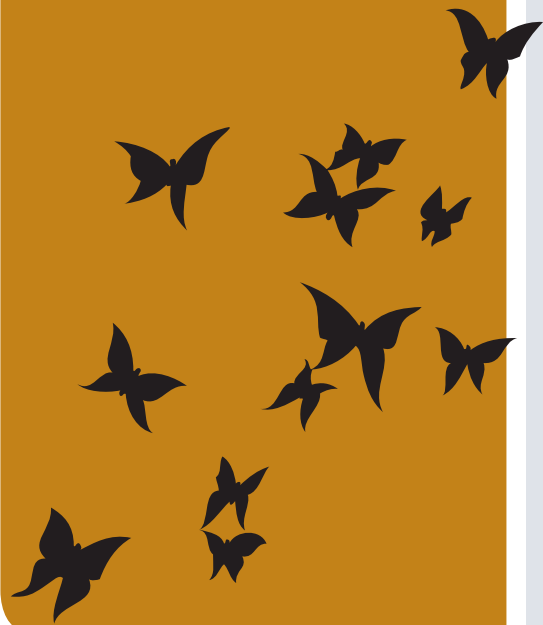
Rachel York  
*Sales Associate*



## VOLUNTEERS

(BY HOURS 1994 - 2008)

The dedication of our volunteer corps is essential to our visitors' experience. From assisting guests to holding Rosie, to teaching youth education classes, to tending our gardens, these individuals are critical to the daily operations of our facility. We thank them for their generosity, enthusiasm, and talent.



### 7,500+ hours

Warren Fair

### 6,000+ hours

Fred Linck

### 1,000 – 4,999 hours

Austin Brown  
Joann Dawe  
Alice Doyle  
Cathy Fennelly  
Annemarie Garza  
Francis (Fran) Haas  
Lora Kreutzer  
Ernest Merkel  
JoAnn Moore  
Barbara Portz  
David Sherman  
Mike Sipes  
William Vickers  
Kenneth Williams

### 500 – 999 hours

Kyle Andrews  
Elizabeth Archer  
Paul Bay  
Freya Berntson  
Ann Brown  
Ruthie Claman  
Ross Echtermeyer  
BP Friends  
Gary Gagnon  
Virginia Hokenson  
Richard Jarboe  
Nancy Jessee  
Bunny Kleinhenz  
Dee Lidvall  
Carol McCracken  
Derek McCracken  
Jan Milner  
Cheryl Patrick  
Karissa Proctor  
Sherry Ruby  
Andrea Shelby  
John Shofner  
Kathy Shofner  
Christina Sisler

### 100 – 499 hours

Robyn Anastos  
Kathryn Archer  
Pat Baldwin  
Samantha Bonelli  
Lanae Brandenburg  
Mary Broughall  
Ashley Bruno  
Kristy Cole  
Yolanda Cole  
Vern Collins  
Eloise Cook  
Chelsie Davia  
Keila Deitz  
Susan Dickinson  
Janet Dills  
JoAnn Ellerbrock  
David Ennis  
Katie Feldman  
David Fending  
Nedra Fortune  
Boettcher Foundation  
Scholars  
Ardy Gardner  
Carol Githens  
Dmitriy Grachev  
Alex Gray  
Peggy Guy  
Lori Harrison  
Jason Haubenreiser  
John Hoyman  
Brandon Idelberger  
Jody Jagersky  
Martha Jones  
Maira Jones  
Mike Lance  
Anita Liuzzi  
Janet Lutz  
Roxie Marcum  
Shirley McConnell  
Judith McFadden  
Jane Meyer  
Daniel Mock  
Lorraine Montoya  
Bonnie Moore  
Fred Nadel  
Sarah Nelson  
Amanda Noland  
Kara O'Dell  
Stephen Reul  
Lynn Riley  
Sherry Rubinstein

Diane Saucier  
Stephanie Sinsroy  
Jo Smith  
Leah Smith  
Omar Solis  
Randy Sorenson  
Jeremy Sunder Raj  
Bekah Tomsick  
Maureen Tooher  
Jennifer Turner-Valle  
University of Colorado -  
Engineers  
Donalyn White  
Judith Wilbourn  
Fred Yahrling  
Ariana Yong

### 99 and fewer hours

Colorado Academy  
Cathleen Adams  
Diane Anderson  
Cindy Atencio  
April Baran  
Gina Barbieri  
Sarah Barkman-Berndt  
Brandon Barnes  
Ashley Bass  
Rachel Bechhoefer  
Mary Lou Beitel  
Carol Belica  
Priscilla Bergstrom  
Jennifer Bibles  
Arthur Biegunajty  
Christine Biglow  
Gretchen Bolivar  
E.E. Boswell  
Elizabeth Boyd  
Elycia Boyer  
Kari Boys  
Mark Brito  
Libby Brophy  
Bob Brown  
Elizabeth Brundage  
Amanda Buel  
Jennavee Bulinski  
Dorothy Burhorn  
Adam Burke  
Lance Burkett  
Ron Cabrera  
Don Calderon  
Grace Canles  
Luci Capo Rome

Loretta Cawelti  
Heather Chuey  
Brad Cole  
John Collar  
Colorado State University -  
Entomology Club  
Kyle Conrad  
Cathy & Don Cook  
Youth Corps  
Stephana Cross  
Kevin Cummins  
Chris Dahl  
Emily Dahlberg  
Mary Daly  
Mary Dambman  
Alexandrea Degenstein  
Genave Domenico  
Larry Dubois  
Ingrid Duke  
Nancy Dukes  
Shannon Dunlap  
Trish Dunnigan  
Joyce Edwards  
Kristine Edwards  
Max Ehlinger  
Bradford Ellsworth  
Yvette Ellsworth  
Gloria Eshelbrenner  
Cara Fisher  
Andrea Forrest  
Madeline Frey  
Sarah Gleason  
Susy Gloor  
Jonna Goldtrap  
Sylene Goodwin  
Jennifer Graf  
Jonathan Graf  
Cathy Gray  
Kathryn Greeson  
Nancy Gremel  
Tanya Griego  
Clay Grover  
Lorrie Grube  
Dan Guth  
Marla Hansel  
Carolyn Haug  
Dana Hayward  
April Hedstrom  
Tim Heine  
Amber Higgins  
Rachel Hill

Robb Hinds  
Heather Hodgins  
Sara Holder  
Alison Hopkins  
Kathleen Hopkins  
Catherine Hurst  
Tina Janda  
Jennifer Johnson  
Patricia Kaowthumrong  
Laura Kellogg  
Amy Kelso  
Micki Kemper  
Jennifer Keydel  
Keith Keydel  
Daniel Kim  
Robin Kirk  
Charlie Kirkham  
Ryan Dennie  
Amy Klamm  
Sarah Kortnicki  
Larry Dubois  
Ingrid Duke  
Nancy Dukes  
Shannon Dunlap  
Trish Dunnigan  
Joyce Edwards  
Kristine Edwards  
Max Ehlinger  
Bradford Ellsworth  
Yvette Ellsworth  
Gloria Eshelbrenner  
Cara Fisher  
Andrea Forrest  
Madeline Frey  
Sarah Gleason  
Susy Gloor  
Jonna Goldtrap  
Sylene Goodwin  
Jennifer Graf  
Jonathan Graf  
Cathy Gray  
Kathryn Greeson  
Nancy Gremel  
Tanya Griego  
Clay Grover  
Lorrie Grube  
Dan Guth  
Marla Hansel  
Carolyn Haug  
Dana Hayward  
April Hedstrom  
Tim Heine  
Amber Higgins  
Rachel Hill

Holly Morgan  
Dana Morganroth  
Amber Morris-Carr  
Tasha Morrison  
Mortar Board - CU  
Reta Mounger  
Delores Mull  
Thao Nguyen  
Monica Owens  
Walter Penny  
Lauren Perdue  
Kate Perkins  
Joey Pettit  
David Phillippe  
Nina Phillips  
Breanna Pierluiss  
Carole Pool  
Merry Popa  
Zach Powell  
Adam Prieur  
Amanda Pruess  
Dick Pulhamus  
Taylor Pulhamus  
Kathy Raaf  
Jo Rasmussen  
Sean Reed  
Lee Reeves  
Thomas Reilly  
Nicole Rice  
Blanche Richards  
Allyson Richey  
Colleen Roach  
Kevin Roberts  
Matt Roberts  
Lois Rosenquist  
Seniors RSVP  
Sadie Russo  
Christine Santistevan  
Cory Sargeant  
Laura Saul  
Tara Scarborough  
Megan Scheele  
Jocelyn Schilling  
Jennifer Schrant  
Teri Schuch  
Nina Shaluly  
Doe Shively  
Brianna Shuler  
Sigma Lambda -  
Gamma Sorority  
Malinda Slaybaugh  
Edward Smith

Kelsey Smith  
Jamie Sorenson  
Tim Sorenson  
Kasandra Sorenson  
Beau Spangler  
Brit Spangler  
Lindsey Stillian  
Gary Stillmunkes  
Michelle Stremich  
Anna Stroh  
Sarah Swan  
Stephanie Szostek  
Target  
Katherine Tate  
Paula Teeple  
Jeff Thompson  
Carole Pool  
Merry Popa  
Zach Powell  
Adam Prieur  
Amanda Pruess  
Dick Pulhamus  
Taylor Pulhamus  
Kathy Raaf  
Jo Rasmussen  
Sean Reed  
Lee Reeves  
Thomas Reilly  
Nicole Rice  
Blanche Richards  
Allyson Richey  
Colleen Roach  
Kevin Roberts  
Matt Roberts  
Lois Rosenquist  
Seniors RSVP  
Sadie Russo  
Christine Santistevan  
Cory Sargeant  
Laura Saul  
Tara Scarborough  
Megan Scheele  
Jocelyn Schilling  
Jennifer Schrant  
Teri Schuch  
Nina Shaluly  
Doe Shively  
Brianna Shuler  
Sigma Lambda -  
Gamma Sorority  
Malinda Slaybaugh  
Edward Smith

**2008 BOARD  
OF DIRECTORS**

Chalmer William (Bill) West  
*Chair*

Luanne Williams  
*Vice Chair*

Ned Lidvall  
*Treasurer*

Andrea Forrest

Carole Pool

Carolyn Haug

Elena M. McCall

Fran Haas

Larry Dubois

Loretta R. Cawelti

Mary Dambman

Mindy Meiklejohn

Ron Cabrera

**2008 SCIENTIFIC ADVISORY BOARD**

Paula E. Cushing, Ph.D. *Curator of Entomology and Arachnology  
Zoology Department  
Denver Museum of Nature and Science*

M. Deane Bowers, Ph.D. *Professor & Curator of Entomology, University Museum  
Department of Ecology & Evolutionary Biology  
University of Colorado*

James E. Klett, Ph.D. *Department of Horticulture and Landscape Architecture  
Colorado State University*

Paul A. Opler, Ph.D. *Department of Bioagricultural Sciences and Pest Management  
Colorado State University*

Boris C. Kondratieff, Ph.D. *Department of Bioagricultural Sciences and Pest Management  
Colorado State University*

Frank T. Krell, Ph.D. *Curator of Entomology  
Zoology Department  
Denver Museum of Nature and Science*

**FUN FACT**

*Covering less than 2% of the  
Earth's total surface area, the world's  
rainforests are home to 50% of  
the earth's plants and animals.*





The Butterfly Pavilion owes its success to the generous supporters of our organization. With the help of our members and donors, we have provided valuable science education to over 450,000 students and invertebrate information to 3.25 million visitors, further spreading the word about habitat conservation and environmental protection. The following donors supported the Butterfly Pavilion from January 1, 2008 to December 31, 2008.

### SCFD

The Butterfly Pavilion received significant funds from the Scientific & Cultural Facilities District (SCFD) in 2008. Voters in the Denver metro area created SCFD in 1998 to provide a consistent source of unrestricted funding to scientific and cultural organizations. Since then, the SCFD has funded more than 300 organizations via the 0.1% retail sales and use tax (one penny on every \$10). Adams, Arapahoe, Boulder, Broomfield, Denver, Douglas, and Jefferson counties comprise the district.

### GRANTORS

- |   |   |   |  |  |
|---|---|---|--|--|
| <p><b>\$20,000+</b><br/>Rotary Club of Denver Metro North</p> <p><b>\$10,000+</b><br/>The Denver Foundation</p> | <p><b>\$5,000+</b><br/>McCormick Tribune Foundation<br/>New Belgium</p> <p><b>\$3,000+</b><br/>Target Community Relations</p> | <p><b>\$1,000+</b><br/>City of Westminster<br/>Odell Brewing Company<br/>Safeway Foundation</p> | <p><b>Under \$1,000</b><br/>Carino's Italian Grill<br/>Dave &amp; Buster's<br/>McStain/Hoyt Foundation</p> | <p>One Lens Productions LLC<br/>TCF National Bank<br/>Your True Nature</p> |
|---|---|---|--|--|

### PATRON LEVEL DONORS

- |  |   |   |   |
|--|---|---|---|
| <p><b>\$2,000+</b><br/>Ned Lidvall<br/>Michael Miller</p> <p><b>\$1,000+</b><br/>Rebecca Chapman</p> <p><b>\$500+</b><br/>Chris Graves</p> <p><b>\$250+</b><br/>Loretta Cawelti<br/>Francis Haas<br/>Developmental Pathways<br/>Chalmer William West</p> | <p><b>\$100+</b><br/>Erin Arsenaault<br/>Stacey Bahr<br/>Susan Bauer<br/>Sherrill Beaudoin<br/>Bill Bleau<br/>Tiffany Carlson<br/>Josh Carter<br/>Mary Chady<br/>Georgia Christensen<br/>Frances Coet<br/>Anita Colin<br/>Brian Dodd<br/>Andrea Forrest</p> | <p>Karla Friar<br/>Christopher Geeting<br/>Shelly Gerding<br/>Carolyn Grant<br/>Ronald Harris<br/>Randal Heinz<br/>Richard Hentzell<br/>Virginia Heye-Dane<br/>Kathryn Huwaldt<br/>Rich Jarboe<br/>Sandra Jolley<br/>Thomas Jorden<br/>Diana Karowe<br/>Janice Kinnin</p> | <p>Birdie Klingensmith<br/>Kevin Koslov<br/>Sarada Krishnan<br/>Bob Krugmire<br/>Beth Leuchten<br/>Sherri MacLean<br/>Maria Matney<br/>Elena McCall<br/>Dean McFail<br/>Larry McNally<br/>Jan Milner<br/>Stephen Nealley<br/>Carol Neustadter<br/>Robert Newman</p> |
|--|---|---|---|

### IN-KIND DONORS

- |   |  |  |
|---|--|--|
| <p>Tonya Powers<br/>Jeff Rumbirt<br/>Sandra Sandidge<br/>Paul Sanzo<br/>Jana Schaefer<br/>Phillip Schein<br/>Charleena Schooley<br/>Ed Tanner<br/>Brittany Weibel<br/>Luanne Williams<br/>Jacqueline Woodrum<br/>Dave Yip<br/>0</p> | <p>Nicole Bickford<br/>Butler Rents<br/>Dancing Cloud Photography<br/>Dave &amp; Buster's<br/>Virginia Hokenson<br/>Marble Slab Creamery<br/>Lori Miller<br/>Omni Interlocken Co. LLC<br/>Opera Colorado<br/>Sierra Colburn<br/>Laura Small<br/>Patricia Spetz<br/>Sweet Leaf Beverage Company</p> | <p>Tagawa Garden Center &amp; Florist<br/>The Food Guy<br/>The Gourmet Kitchen<br/>Lori Wise</p> |
|---|--|--|



### ■ HOW CAN AN INSECT BE THE KEY TO A SUSTAINABLE ENVIRONMENT?

■ Sustainability, in a general sense, is the capacity to maintain a certain process or state indefinitely. We have come to realize that our lives will continue to be more and more governed by principles of sustainability as cities, states, and even countries embrace a more enduring approach to natural resource management. Until just recently, natural resource intensive strategies have not only been the norm, but instead have gone basically unquestioned in order to support our growing needs as consumers. However, citizens, businesses, and legislators alike are discovering innovative ways to expand their current efforts while at the same time better utilizing and conserving resources.

■ So, again how can an insect be the key to a sustainable environment? Insects make up over three-quarters of the world's animal species and are a vital part of every ecological system in which we live. From the billions of dollars spent managing Malaria in the tropics, to US farmers transporting bees across country to pollinate crops, it does not take us long to realize how relevant insects are in our everyday lives. As an institution focused on the conservation of invertebrates, especially insects, the Butterfly Pavilion continues to be a leader in providing quality, poignant environmental education about the relevancy of insects and invertebrates.

■ Each year at the Pavilion, thousands of children get their first hands-on encounter with invertebrate life. They quickly begin to develop an understanding of these creatures' importance. A living rainforest with tropical butterflies is perhaps one of the most unique, memorable and impactful experiences a child may ever have. Yet it is our adult visitors that are creating the greatest connection to the Butterfly Pavilion and its efforts. With every paid admission we dedicate a significant investment to the preservation of our most valuable, and threatened natural resource – our tropical forests.

By purchasing butterfly chrysalises, which later emerge into the beautiful butterflies you encounter in our Wings of the Tropics exhibit, we provide butterfly farmers around the globe a consistent and productive source of income. Sustainable agriculture not only sets aside significant tracts of tropical habitat forever, and also helps secure financial stability for hundreds of indigenous people of emerging nations. Back here in Colorado, we in turn highlight the impact of these innovative business practices through interactive educational programming and hands-on insect discovery.

Presently, the value of insects as pollinators and recyclers can be calculated in the billions of dollars globally, while the next 25 years may see bio-credits and ecological assets offset the cost of questionable development practices. Everywhere we turn we are finding new ways to alter and improve best practices and save valuable resources. The Butterfly Pavilion's goal is to continue to remain ahead of the curve as we promote sustainable agriculture and land conservation through insects, invertebrates and education. Butterflies are just the beginning!

BUTTERFLY PAVILION