



BUTTERFLY PAVILION

Annual Report

2012



# Letter from President and CEO Patrick Tennyson

Dear Friend,

2012 was one of the most exciting years in Butterfly Pavilion history. As a member, supporter, donor, or patron it is a wonderful time to be part of our flourishing efforts. We have taken many instrumental steps to ensure our mission is realized and more importantly, resonates with our community and stakeholders. We remain fiscally very strong and continue to strategically ensure we remain relevant and engaging, and that our future direction is very deliberate.

Our mission, our purpose, is connection! We immerse visitors in splendor, foster anticipation and excitement, and connect people to the astonishment of the natural world. At the same time we strive to connect hearts and minds. We highlight unique and misunderstood creatures in ways that connect curiosity with knowledge, understanding with beauty, and ultimately connect appreciation with a call to action. We hope these actions will mold our future and influence the choices we each make in regards to our environment.

The accomplishments of 2012 underscored these connections as visitors experienced new renovations to exhibits, expansion of educational programming, and improvements to the way we engage visitors through the importance we place on simple one-on-one interactions. These connections were exemplified in the numbers of visitors served and the level of investment that visitors made in our efforts last year. In 2012, 297,944 visitors explored and connected to Butterfly Pavilion. This was the second largest single-year attendance in organizational history. We also saw a steady increase in member households, signifying greater community investment in the work we do.

Letter from the President  
Vision | Mission | Impact • 2  
Conserving the Canopy  
through Butterfly Farming • 4  
2012 Highlights • 8  
Financials • 12  
Donors | Supporters • 14  
In-Kind Contributors • 15  
Volunteers: Lidvall Story • 16  
Volunteers • 17  
Board of Directors • 18  
Scientific Advisory Board • 19  
Staff • 20



Here are just a few of the many highlights from 2012:

- We closed 2012's efforts with an operating budget surplus and continue to strive to establish fiscal stability for growth now and into the future.
- Major renovations were made to our Crawl-A-See-Em exhibit, creating more opportunities for visitors to engage with our animals and improving the flow of the exhibit. Additionally, we added critical storage space for our retail, exhibits, and horticulture efforts.
- We welcomed a much needed Vice President of Operations who now oversees visitor experience, retail, and the operations facet of the business, putting an emphasis on customer service and amenities.
- We embarked on a major collaborative Dual Membership with the Children's Museum of Denver. This Dual Membership program is Colorado's first ever major collaborative membership between two cultural organizations, and it's been wildly popular.
- Four new board members joined the team, expanding the board workload and helping to form a new board sub-committee structure.
- And much more which you will learn about in the following pages!

Again, it is a very exciting time to be a part of Butterfly Pavilion. We strive to make the Butterfly Pavilion experience a unique, engaging, and memorable one. Our ultimate goal is to foster a connection; be it an inspiring stroll through our rainforest or an exhilarating outreach program at one of the Denver area's schools. Our desire is to create an experience that generates reflection, and one that folks talk about for weeks and weeks after. We have very high expectations and we continue to make the appropriate investments to ensure those type of connections are a reality. At the heart of it, we believe that an appreciation of the environment begins with an appreciation of all living things. Every day we teach the young and old alike about the need for conservation, because with knowledge and empowerment we will protect the world's natural habitats for generations to come.

I thank you for your continued support and your investment in all we do!

Sincerely,

**Patrick Tennyson**

PRESIDENT AND CEO, BUTTERFLY PAVILION

# Butterfly Pavilion

## Vision

We believe that an appreciation of the environment begins with an appreciation of all living things. Every day we teach the young and old alike about the need for conservation, because with knowledge and empowerment we will protect the world's natural habitats for generations to come.

Butterfly Pavilion hosted **297,944 on-site visitors.**

We served **56,864 school children** through on-site class visits and outreach programs.

We raised over **\$7,000** through our **Conserve the Canopy campaign** to protect and preserve rainforest habitats where we source our butterflies.

**41,320 pupae** were imported from **11 butterfly farms** across the globe, **investing over \$73K** in the sustainable business practice of butterfly farming, which provides a fair trade income to people in the tropics while keeping the rainforest intact.

**30,953 butterflies and moths** flew for the very first time in our rainforest.

**31 different tarantula species** were featured in our collection, including one that is on the critically endangered list and **13 that are protected.**

We had **4 successful tarantula breedings**, resulting in a total of **1,670 spiderlings.** Our zoologists made more than **400 animal identifications** to help educate the community about invertebrates.

**\$15,000 was awarded** in field trip and class scholarships, helping nearly **11,500 students** and nearly **159 schools.**

Our volunteers provided **13,824 hours of community service**, which is the equivalent of **7 full-time employees!**

Butterfly Pavilion educators led **15 teacher enrichment classes** providing **238 professional educators** with Colorado State Model Content Standards for the Life Sciences (K-12).

**1,427 adults** participated in engaging programs that appeal to the lifelong learner in all of us.

**226 non-profit organizations** each received a donation of four in-kind tickets, which equates to **\$7,684 of support** to the fundraising efforts of our fellow non-profits.

We had **23 engaging camps** which provided **169 excited campers** with memorable experiences connecting them to nature and encouraging an appreciation for science.

## Mission Impact 2012

We had nearly **30,000 attendees** at our free, classroom-based "**Spineless Spotlight**" programs providing every visitor with the opportunity to interact with environmental education leaders.

We interacted with **25,702 people at community fairs and events** further educating people about the importance of habitat conservation.

We saw nearly **16,000 attendees** at our **five major public events**.

## Butterfly Pavilion Mission

Our mission is to foster an appreciation of invertebrates while educating the public about the importance of conservation of threatened habitats in the tropics and around the world.

# Conserving the Canopy

## through Butterfly Farming



Have you ever wondered how Butterfly Pavilion is able to house thousands of beautiful and distinctive tropical moths and butterflies? Ever ponder where these fascinating animals come from? The answer is at the very core of our mission to conserve threatened tropical habitats around the globe. It is butterfly farming; a sustainable business practice that combines profitability, positive welfare for people and their communities, and the preservation and protection of our precious planet.

To explain more about butterfly farming, it's important to convey why Butterfly Pavilion cares about rainforest conservation. What is so important about rainforests that inspires us to do what we do? Tropical habitats are vital to our global economy and environment. There are many ways we are connected to rainforests and all that is sheltered under their canopies. Here are just a few:

### CLEAN AIR

Rainforests are often described as the lungs of our planet because they continuously recycle carbon dioxide into oxygen. In fact, more than 40% of the world's oxygen is produced in the tropics. Rainforests remove carbon dioxide (CO<sub>2</sub>) by absorbing and storing it in their roots, stems, leaves, and branches and then in turn release valuable oxygen. By converting CO<sub>2</sub> into clean air, rainforests not only mitigate and combat

pollution; they also help to keep our global temperature stable. Even though we call Colorado home, we know that our air quality is influenced by the health of the world's rainforests.

### FOOD

Approximately 80% of the developed world's diet originates in the tropical rainforest. Rainforests have introduced communities around the globe to fruits like avocados, coconuts, figs, oranges, lemons, grapefruit, bananas, guavas, pineapples, mangos, and tomatoes; vegetables such as corn, potatoes, rice, winter squash, and yams; spices like black pepper, cayenne, chocolate, cinnamon, cloves, ginger, sugar cane, and vanilla; and last but not least, coffee! Organizations such as the Rainforest Alliance support sustainable agricultural practices in the tropics to fuel our global economy and food supply.



## MEDICINE

70% of the 3,000 cancer-fighting plants identified by the U.S. National Cancer Institute are found in the rainforest. At least 25% of all modern drugs come from the rainforest; however, less than 1% of the world's tropical plants have been tested for pharmaceutical properties. The potential of these plants is enormous! The periwinkle plant, for example, is only found in rainforest habitats; it is one of the world's most powerful anticancer drugs, and dramatically increases the survival rate for acute childhood leukemia.

## PLANTS + ANIMALS

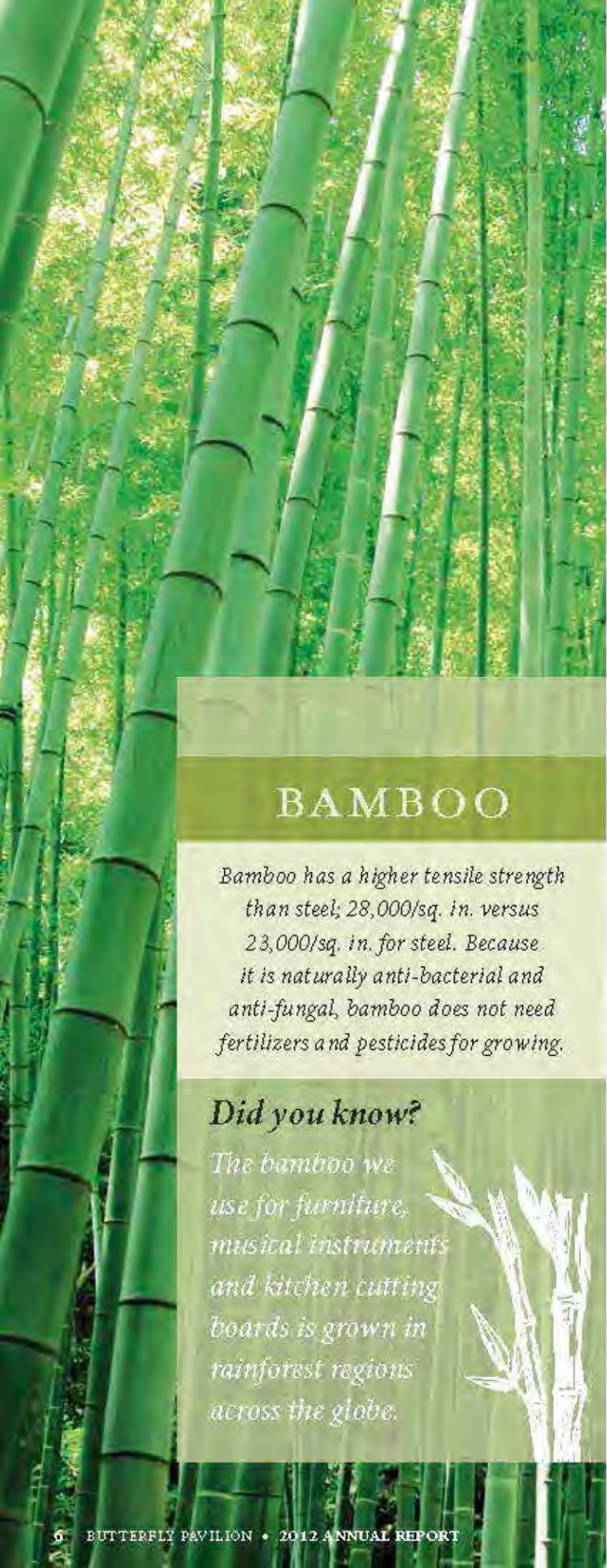
Rainforests only cover 6% of the earth's land surface; however, they are home to over 50% of all living things on earth. That means over half of the world's estimated 10 million species of plants and animals live in tropical rainforests. In the Amazon Rainforest scientists have identified 18,000 varieties of plants, 434 species of mammals, 239 reptile species, 225 species of amphibian, and more freshwater fish and primates than anywhere else on the planet. That's the definition of biodiversity!

Butterfly Pavilion is connected to tropical rainforests through our appreciation of all that they provide—clean air, fresh water, sources of food and medicine, and of

course, biodiversity which allows us to feature some of the most astonishing and gorgeous plants and animals on the planet right here in Colorado.

Unfortunately, many of the world's tropical habitats are at risk of destruction. Rainforests once made up 14% of the earth's land surface; now they cover only 6%. At this rate some experts estimate that our remaining rainforests may be consumed in less than 40 years. On average, one and a half acres of rainforest are lost every second. Scientists have calculated that we lose approximately 137 plant and animal species every day due to rainforest deforestation. That's about 50,000 species a year, including species of plants which very well may hold the key to curing life-threatening diseases such as cancer, and species of animals that fill irreplaceable roles in our ecosystems.

The threat to our rainforests is also a threat to the quality of our air and water. The loss of rainforest habitat contributes to approximately 13% of all greenhouse gas emissions each year — about the same percentage as all the world's trains, planes, and automobiles combined. Ensuring that our rainforests remain intact and healthy is essential to combating the threat of climate change and global warming.



## BAMBOO

*Bamboo has a higher tensile strength than steel; 28,000/sq. in. versus 23,000/sq. in. for steel. Because it is naturally anti-bacterial and anti-fungal, bamboo does not need fertilizers and pesticides for growing.*

### *Did you know?*

*The bamboo we use for furniture, musical instruments and kitchen cutting boards is grown in rainforest regions across the globe.*



These statistics are daunting; however, progress is being made in conserving the canopy. Take Butterfly Pavilion as an example. We believe that an appreciation of the environment begins with an appreciation of all living things. That is why our zoo is dedicated to the earth's small wonders. If we foster an appreciation for the tiniest of animals and their habitats, we will ultimately help to create an understanding and gratitude for all plants and animals, and inspire their preservation and protection. Every day we teach the young and old alike about the need for conservation through experiences such as walking through our very own tropical rainforest. With knowledge and empowerment, we will work together to protect the world's natural habitats for generations to come.

That is why butterfly farming is so important, not only to Butterfly Pavilion, but to the health and well-being of our global environment and community. Butterfly farming provides an alternative to traditional farming, which often requires the clear cutting of natural habitats in the tropics. Unlike traditional farming, butterfly farming is dependent upon the native plants. By the nature of the work, butterfly farmers are motivated to keep areas of land—sometimes quite large—intact in their natural state. At the very least, a butterfly farmer must plant native plants in and around the farm to serve as a reliable food source for the larvae which will eventually become pupae and then butterflies. Butterfly farming is a beautiful solution to rainforest deforestation because it relies on establishing a mutual relationship with native plants and the habitats which they create.

The practice of butterfly farming is difficult to master; however, more and more butterfly farms are being established in tropical habitats around the globe, in part due to the higher demand from invertebrate zoos like Butterfly Pavilion for butterfly pupae. In addition to having a positive impact on the environment, butterfly farming provides rural communities with a positive boost to their economies. Farmers may choose to cut down the forest for what may only be a one-time crop, or keep it intact by harvesting butterfly pupae and thus creating a sustainable and reliable source of income.

The process broken down in its simplest terms is as follows: butterfly farmers catch a few female butterflies from the wild and transfer them to an enclosure where they lay eggs on native host plants. The farmers then collect the eggs and wait for caterpillars to hatch. The caterpillars are placed on new plants and feed until they pupate and become chrysalides. Chrysalides are carefully packaged and sent to butterfly houses and invertebrate zoos all over the world.



Butterfly farming is so sustainable because a single female butterfly lays between 250 and 500 eggs in her lifetime. That means very few female butterflies are required to start captive populations. After starting a population, butterfly farmers only return to the wild occasionally to catch wild males to ensure the captive population has good genetic diversity. The reproductive capacity of butterflies ensures that the very limited extraction of wild butterflies by the farmers has virtually no effect on the health of the wild population. The primary cause of butterfly extinction is habitat destruction. By providing an economic incentive to conserve butterfly habitat, butterfly farming conserves butterfly species, along with animal species found in the rainforest.

The chrysalides that visitors see at Butterfly Pavilion come from tropical habitats thousands of miles away in countries including Kenya, Costa Rica, and the Philippines. They make their long journey to eventually emerge and fly in our tropical rainforest. On average, we have 100 different butterfly species totaling 1,600 free flying butterflies in our Wings of the Tropics exhibit. These beautiful creatures bring joy to our visitors in Colorado while also helping to keep rainforests intact around the globe. Every visit to Butterfly Pavilion supports rainforest conservation. Together, we are conserving the canopy!

Now you know where our butterflies originate from and why. Last year, Butterfly Pavilion imported 41,320 pupae investing over \$73,000 in the sustainable business practice of butterfly farming, which provided a fair trade income to people in the tropics while keeping the rainforest intact. On average we invest \$80,000 per year in butterfly farming which allows us to contribute to global rainforest conservation efforts. This inspires us to provide an amazing experience for our visitors, all the while knowing their joy and wonder is helping to create a more sustainable world.



## SWEETGUM

*The Sweetgum tree's gum is used in chewing gum and medicines. The tree can grow up to 120 feet high and 5 feet in diameter.*

### *Did you know?*

*The hardened sap (gum resin) excreted from the wounds of the Sweetgum can be chewed like chewing gum and has been long used for this purpose.*



# 2012 Highlights

## January



Extended **Living Lights**, our annual holiday lighting event featuring over 20,000 twinkling lights and larger-than-life invertebrate sculptures made from 95% recycled steel, to include six nights in January!

## February



Established a partnership with **Mapleton Early College** to host student volunteers and interns each semester, giving them real-life experience in the working world.

## April



Launched a Dual Membership with **Children's Museum of Denver**; one membership to two fantastic destinations and the first of its kind in Colorado.



Successfully bred the **Green Bottle Blue tarantula** as part of our Tarantula Breeding Program.

## May



Expanded our **concession area**, bringing in more drink selections, ice cream, and an array of organic items.

## June



Began offering **fly fishing camps** in partnership with Angling University, opening up our summer camp age range to 10 to 14 year olds.



Our **Curly Hair Tarantula Growth Study** turned one year old!

## March



Renovated our **Tropical Odyssey** exhibit to include live animals, new display cases, and a more defined, interactive space for young children, including a new suspension bridge!

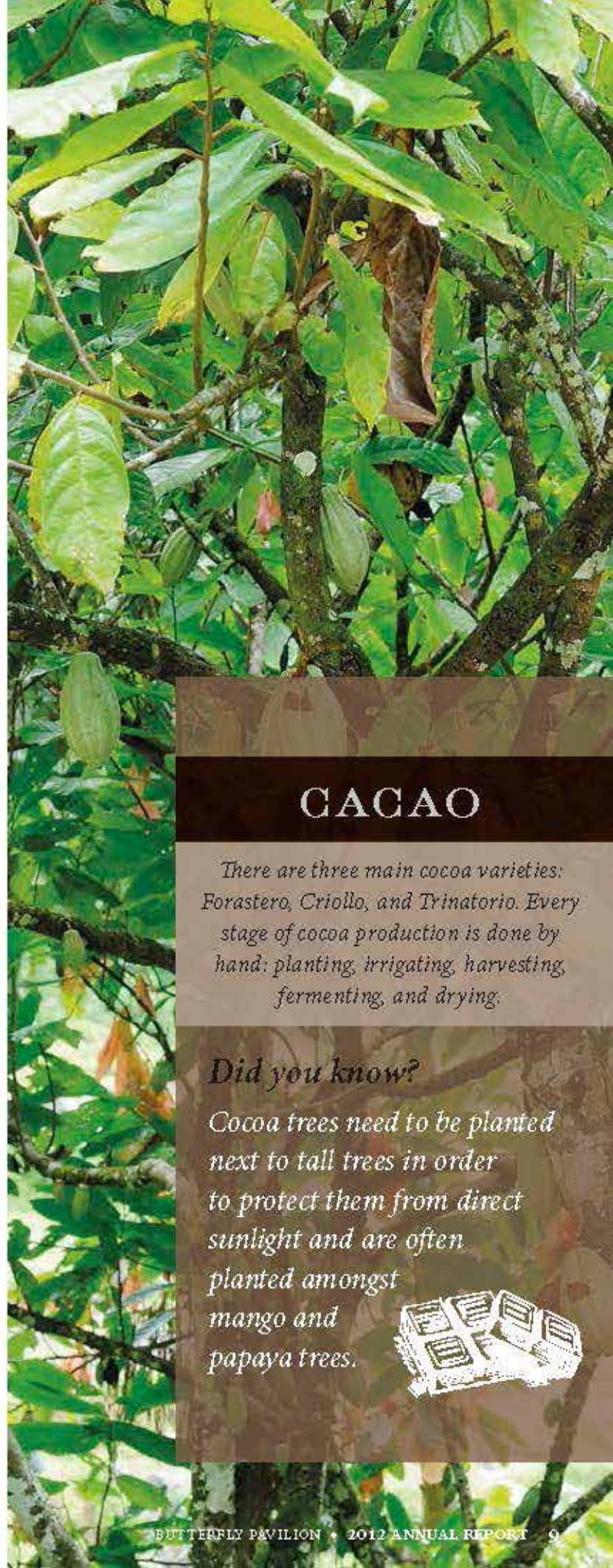
---

We highlight unique and misunderstood creatures in ways that connect curiosity with knowledge, understanding with beauty, and ultimately connect appreciation with a call to action.



We hope these actions will mold our future and influence the choices we each make in regards to our environment.

---



## CACAO

*There are three main cocoa varieties: Forastero, Criollo, and Trinitario. Every stage of cocoa production is done by hand: planting, irrigating, harvesting, fermenting, and drying.*

### *Did you know?*

*Cocoa trees need to be planted next to tall trees in order to protect them from direct sunlight and are often planted amongst mango and papaya trees.*



# 2012 Highlights

## July



Renovated our **animal-rearing room** in order to better accommodate research and animal husbandry as well as our west lawn providing play and picnic space for visitors.



Began work at a new **Bison Study** site in conjunction with the Denver Zoo.

---

The accomplishments of 2012 underscored these connections as visitors experienced new renovations to exhibits, expansion of educational programming, and improvements to the way we engage visitors.

---

## September



Renovated our **Crawl-A-See-Em** exhibit to include a new home for Rosie, an interactive honey bee tree, exhibit "pods" that allow young visitors to be able to see animals better, and a new research station and video.

## November



Presented and exhibited at the **Colorado Science Conference**.

Hosted our **third annual gala** raising over \$52,000 to support our mission!

## December



Led a **schoolyard habitat workshop** for educators in partnership with Colorado Wildlife Heritage Foundation, Plains Conservation Center, and Colorado Division of Wildlife.

## August

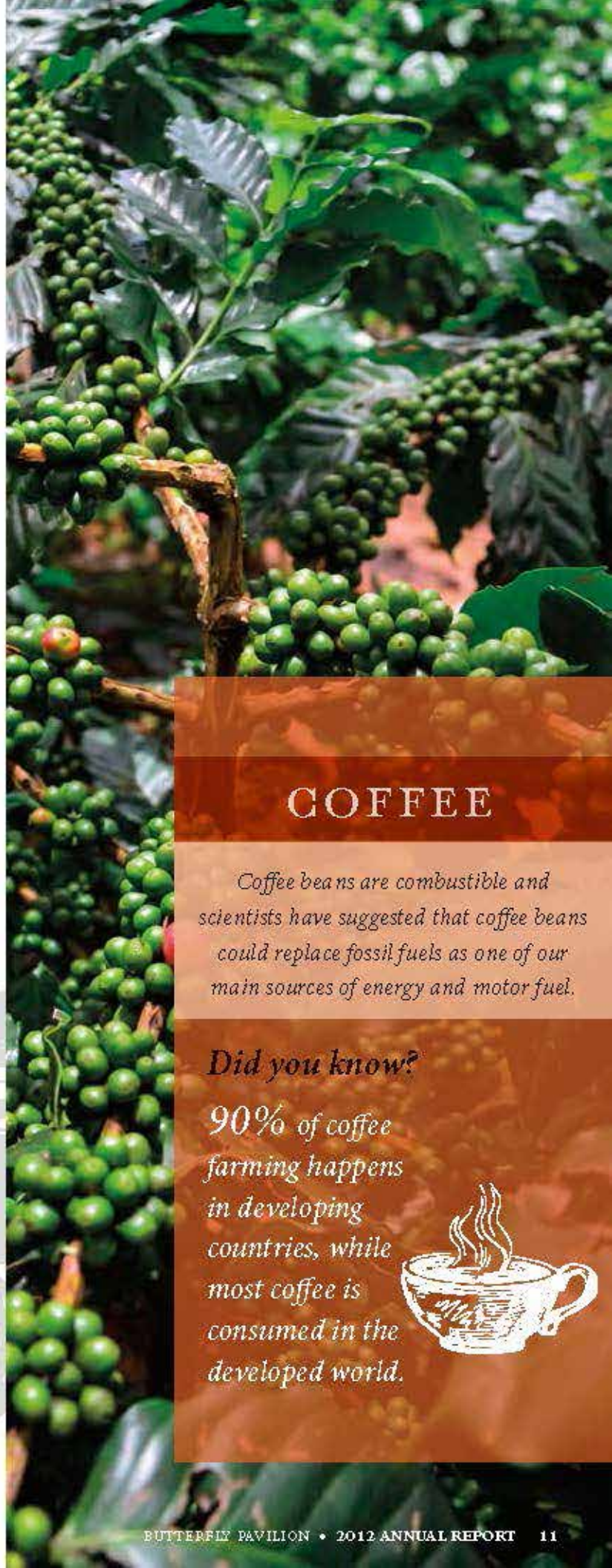


Two of our team members served as lead scientists for the **National Geographic Bioblitz** in Rocky Mountain National Park.

## October



Hosted the **Colorado Science Educators Network meeting** on Next Generation Science Standards for educators across the state.



## COFFEE

*Coffee beans are combustible and scientists have suggested that coffee beans could replace fossil fuels as one of our main sources of energy and motor fuel.*

### *Did you know?*

*90% of coffee farming happens in developing countries, while most coffee is consumed in the developed world.*



# Rocky Mountain Butterfly Consortium

Statement of Financial Position December 31, 2012

REVENUES, GAINS AND OTHER SUPPORT	Unrestricted	Temporarily Restricted	Permanently Restricted	Total
Admissions	\$ 1,336,838	\$	\$	\$ 1,336,838
Museum Store Revenue & Concessions	782,678			782,678
SCFD Revenue	637,189	33,536		670,725
Program Fees	133,099			133,099
Memberships	152,933			152,933
Donations	146,628	59,651		206,279
Investment Income	7,918			7,918
Miscellaneous Income	1,911			1,911
In-kind Contributions	146,169			146,169
<b>TOTAL REVENUES, GAINS AND OTHER SUPPORT</b>	<b>3,412,298</b>	<b>26,252</b>		<b>3,438,550</b>
<b>EXPENSES</b>				
Program Services	2,690,721			2,690,721
<b>Total Program Services</b>	<b>2,690,721</b>			<b>2,690,721</b>
Supporting Services				
General and Administrative	524,892			524,892
Fundraising	211,207			211,207
<b>Total Supporting Services</b>	<b>736,099</b>			<b>736,099</b>
<b>TOTAL EXPENSES</b>	<b>3,426,820</b>			<b>3,426,820</b>
CHANGE IN NET ASSETS	(14,522)	26,252		11,730
<b>NET ASSETS, Beginning</b>	<b>3,659,226</b>	<b>18,370</b>	<b>29,858</b>	<b>3,707,454</b>
<b>NET ASSETS, Ending</b>	<b>\$ 3,644,704</b>	<b>\$ 44,622</b>	<b>\$ 29,858</b>	<b>\$ 3,719,184</b>

## Butterfly Pavilion

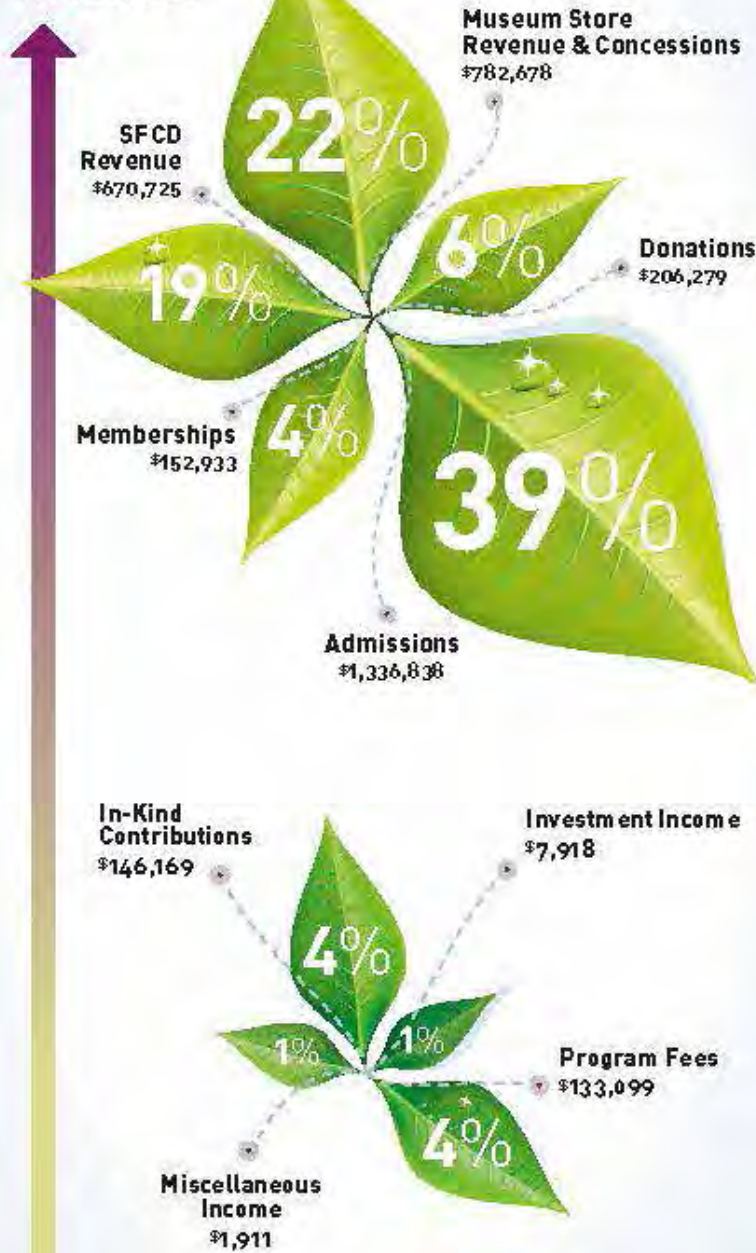
Statement of Financial Position  
December 31, 2012

## ASSETS

2012

Cash and cash equivalents (unrestricted)	\$ 1,057,428
Cash and cash equivalents (temporarily restricted)	44,622
Prepaid expenses	53,823
Accounts receivable	19,543
Gift shop inventory	196,684
Net property and equipment	4,003,200
Beneficial interest in assets held by others	47,686
<b>Total assets</b>	<b>\$ 5,422,986</b>

**TOTAL REVENUE**  
\$3,438,550



**LIABILITIES**

	2012
Accounts payable	\$ 64,558
Accrued payroll costs	130,069
Deferred Revenue and Memberships	113,636
Loan payable	-
Line of credit	-
Bonds payable	1,395,539
<b>Total Liabilities</b>	<b>\$ 1,703,802</b>

**NET ASSETS**

	2012
Unrestricted	\$ 3,644,704
Temporarily restricted	44,622
Permanently restricted	29,858
<b>Total net assets</b>	<b>3,719,184</b>
<b>Total Liabilities and Net Assets</b>	<b>\$ 5,422,986</b>

# Donors & Supporters

## Foundation and Corporation

### \$25,000

American Honda Foundation

### \$20,000

Anschutz Foundation  
Whole Foods

### \$15,000

The Denver Foundation

### \$10,000

K12 Inc

### \$5,000

Encana  
Subaru  
Virginia Hill Foundation  
Belco Credit Union  
Wells Fargo

### \$2,000

Kinder Morgan Foundation  
Kohl's

### \$1,500

Association Zoological Horticulture  
Strategic Employee Benefits Service

### \$1,000 and under

Westin Westminster  
Xcel  
Que Bueno  
Lanx Inc

## Individual

### \$5,000

James Brownlie  
Wilson Porterfield  
Patrick Tennyson  
Steve Woods

### \$2,000

Fred & Mary Lynn Bangs  
Peter Harnisch  
Rob Odea  
Nick Zimmer

### \$1,500

Tracey Bennett  
Lisa Edwards  
Ray Kaltenbach  
Mike Lewter

Nancy Tarver

### \$750

Nicole Bickford  
Sean Brennan  
Jessy Clark

### \$500

Todd Benson  
Nicole Bickford  
Sean Brennan  
Josh Carter  
Joan Griep  
Kerri Grosso  
Kent Hanson  
Linda Hattel  
Richard Jarboe  
Martin Lanik, PhD  
Mike Tennyson  
Mark Wallace

### \$250

Ryan Abbot  
William Bangs  
Lincoln Bauer  
Lisa Bohlmann  
Nancy Casey  
Angela Centrella  
Dianne Centrella  
Shankini Dorasingam  
Larry Dubois

David Edwards  
Robert Folzenlogen  
Miranda Graul  
Carol Griffin  
Mary Ann Hamilton  
Gary Jamell  
Sarada Krishnan  
Michele Lehman  
Kevin Medina  
Erika Messke  
Jan Milner  
Dave Myers  
Fred Nadel  
Jason Peccia  
Ben Schneider  
Dan Seikel  
Paul Vander Veer  
Sally Vander Veer  
Dave Wallace  
Amy Yarger  
Marea Yowsa

### \$100 and under

Mathew Anderson  
Larry Andrus  
Kate Andrus  
Eileen Ault  
Jamie Bahn  
Hugh Bickford  
Jonathan Blair  
Benjamin Bolona  
Barbara Brand  
Bob Briggs  
John Bumgardner  
Roberta Burns  
Sandy Burrell  
Angela Burress-Cardenas  
Sanlyn Burner  
Joanne Gallas  
Rosemary Campbell  
Andy Clarke  
Marissa Copan  
Stefanie Countryman  
Janice Craig  
Sara Custer  
John Cutler  
Laura Davis  
Bruce Dvorak  
Doris Dvorak

Janice Eckhardt  
Angelica Eddleman  
Kent & Sue Enwright  
Tinatin Ereklisuli  
John Fedyski  
Anthony Feola  
William Fisher  
Sarah Folzenlogen  
Lisa Garbin  
Lisa Garcia  
Janet Garrett  
Tim Gebhardt  
Jaime Giesen  
Peggy Goodnight  
Jon Gordon  
Amber Gosh  
Michael Haines  
Robert Hancock  
Anne Hansen  
Tessa Hemann  
Erin Henderson  
Kaitlin Herlihy  
Tim Hodge  
Kristl Howard  
Sara Humphrey  
Jerdean Jandro  
Stacy Jarrard  
Steven Jozik  
Cynthia Killingback  
Susan Klarquist  
Gwen Kochman  
Michelle Koh  
Cheryl Kosmerl  
Bob Krugmire  
Tori Labs  
M. Anne Law  
Lindsay Lehman  
Jody Lehman  
Judith Lightner  
Doug Lipke  
Susan Lipson  
Monica List  
Amy Mata  
Joe Mease  
Lisa Mount  
Cameron Naish  
Deb Norlin  
Glena Nozawa  
Michael Ollendorff  
Charles Ozaki

Amber Partridge  
Nancy Paterson  
Cheryl Patrick  
Richard Plenge  
Lia Presnell  
Larry Piaszek  
Mary Reeder  
Christy Reeves  
Lauren Reynoso  
Eric Rodwell  
Matt Rue  
Evelyn Rutherford  
Mallory Rutherford  
Aaron Salas  
Diane Saucier  
Jeff Savage  
David Schaad  
Kristina Schaad  
Joe Schalk  
April Scolloni  
Sara Shaw  
Gregory Short  
Meredith Shuppy  
Rikke Siersbaek  
Kellie Skaggs  
Chad Skupien  
Kory Smathers  
Jennifer Stahl  
Carol Stienhauer  
Mark Stevens  
Valerie Stone  
David Stuckey  
Greg Sullivan  
Jane Toman  
Debra Tonkin  
Allison Trembly  
Kimberly Urish  
Laura Vaughn  
Darcie Votow  
James Walker  
Priscilla Walker  
Christina Wamsley  
Alyssa Weinstock  
Barbara Weston  
Khan Whitman  
Brigitte Widmer  
Tom Wolf  
Marley Woods  
Heather Wydock  
Bobby Yoswa



## In-Kind Contributors

9th Avenue Liquor Warehouse  
A Music Plus  
A Spice of Life Catering  
Aerial Dance Over Denver  
Arapahoe Basin Ski Area  
Aryada Center for the Arts and Humanities  
Avery Brewing Company  
B Fitness Westminster  
Base Camp Explorer  
Becoming Mothers  
Black Pearl  
Blazen Illuminations  
Blue Sky Photo Booth  
Boulder Humane Society  
Breckenridge Distillery  
Buca Di Beppo  
Buenos Aires Pizzeria  
Butler Rents  
Butterfly Pavilion  
Caribou Coffee  
Channel 9  
Children's Museum  
Clear Channel  
Colorado Cider  
Colorado Railroad Museum  
Decor 'N More  
Denver Botanic Gardens  
Denver Museum of Nature and Science  
Denver Roller Dolls  
Denver Zoological Foundation  
Drury Hotels  
Durango & Silverton Narrow Gauge Railroad Museum  
Dynasty Gallery Glass  
ESPN Radio Denver  
Fantasy Orchids  
Fox 31 Denver & Colorado's Own Channel Two  
Front Range Anglers  
Fun Productions  
Gracie's  
Guayaki Yerba Mate  
Hammond's Candies  
Happy Baby  
Hazels Beverage World  
Hunter Douglas  
Hyland Hills  
Iconic Flowers  
J. Taylor Workman D.D.S  
Jack and Jill Children Salon  
JuJu's Bakery and Cafe  
Jules Gourmet Catering  
Justin's Nut Butter  
KONC  
Lighthouse Writers Workshop  
Living Well  
Loveland Museum  
Maggiano's Little Italy  
Mascot International, Inc.  
McNeil Designer Portraits  
Melissa & Doug  
Memories to Digital  
Mike's Camera  
Nicci Faa Photography  
Nothing Bundt Cakes  
Westminster  
Nova Monda Cacao & Chocolate  
Odell Brewing Company  
Omni Interlocken Hotel  
Pan Fired Catering  
Performance Sports Massage  
Pop Chips  
Purple Mountain Bed & Breakfast  
Putumayo World Music  
Qdoba  
Que Bueno  
Radio Disney  
Rocky Mountain Catering  
Ron's Liquors  
Sinful Cupcakes  
Sky Vine Butterflies  
Southern Wine and Spirits  
Spring 44 Vodka  
Springhill Suites By Marriott  
Denver North/Westminster  
Sprouts Farmers Market  
Summit Chiropractic Care Center  
Sweet Family Secrets  
Tailwind Jungle Lodge  
Texas de Brazil  
The Blues Jean Bar  
The Gourmet Kitchen  
The Pines Catering  
Thin Ice Productions  
Timbuk 2  
Total Beverage  
Transpac Imports, Inc.  
Tuscany Coffee  
Vicjon Enterprises Inc  
Whole Foods Market  
Wilks Broadcasting - Mix 100  
Wynkoop Brewing Company  
Yankee Candle

## BANANA

*Over 100 billion bananas are consumed world-wide annually, the fourth largest agricultural product in the world following wheat, rice, and maize.*

### *Did you know?*

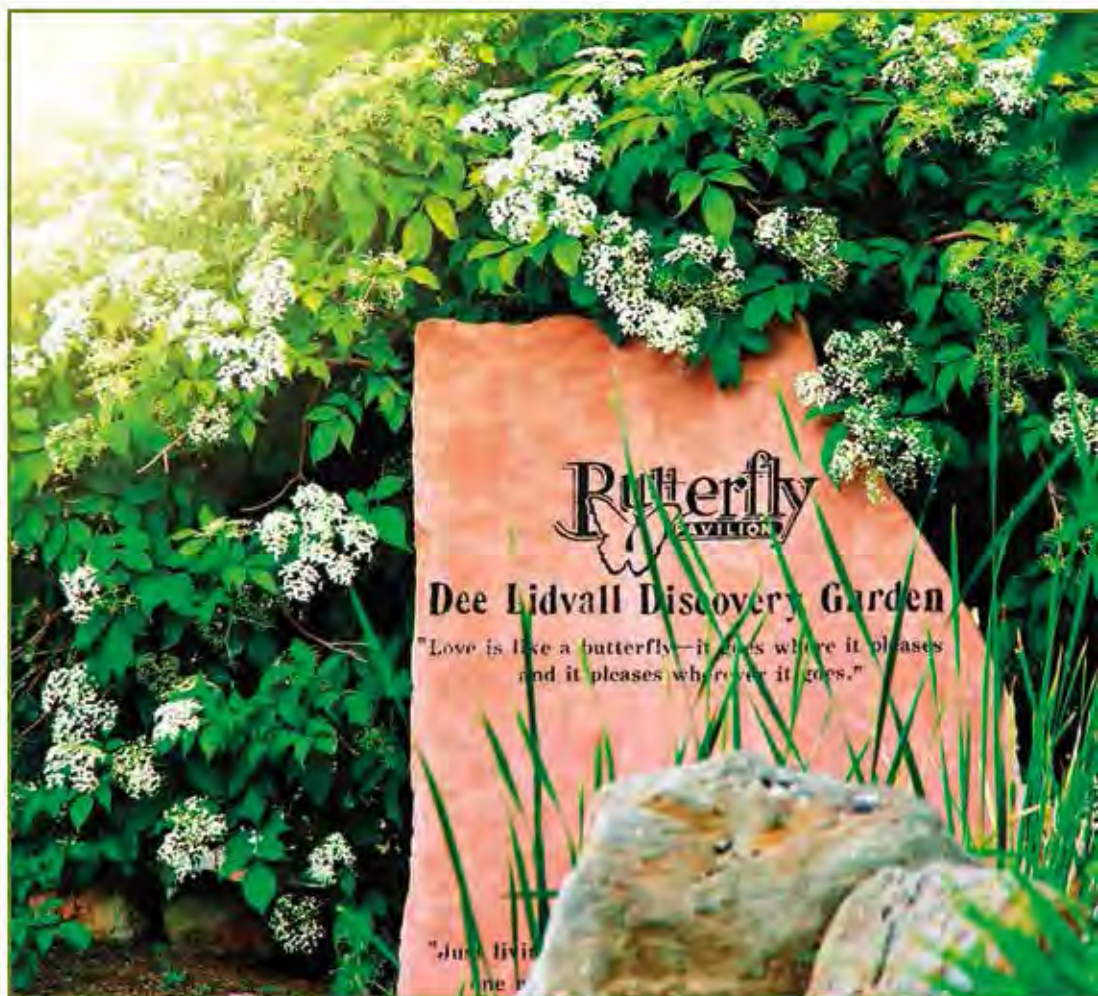
*The banana plant is not a tree but a perennial herb, the largest herbaceous flowering plant in the world, and the banana itself is actually a berry.*



# Volunteer Spotlight

Ned and Dee Lidvall began their longtime friendship with Butterfly Pavilion in 1996 when Dee joined Butterfly Pavilion as a volunteer. Dee led Butterfly Pavilion classroom education efforts and worked tirelessly for over six years as a Classroom Educator. She was Butterfly Pavilion's first official Outreach Educator and was responsible for bringing our animals and education programming to schools across Colorado. In addition, Dee was instrumental in the initial development and implementation of Butterfly Pavilion's award winning Senior Habitat Gardening Program.

While Dee was helping to grow Butterfly Pavilion's education program, Ned was called in to help launch the public company growth of Rock Bottom Restaurants, a casual dining restaurant and brewery chain based in Boulder, CO. As Rock Bottom's Executive Vice President and COO, Ned was instrumental in taking the firm private in a management buyout that returned the company's founder to its ranks. By 2001, Rock Bottom had emerged as one of the most successful contenders in the restaurant and brewery category, selling more beer at their locations than any other brewpub chain. That same year, Ned was named as the company's President and CEO.



Dee and Ned continued to volunteer and contribute to Butterfly Pavilion's success and growth for many years despite having very busy professional and personal responsibilities of their own. Ned served on the Butterfly Pavilion Board of Directors for two years and Dee taught on a regular basis and helped to develop numerous education programs for Butterfly Pavilion. Sadly, Dee passed away in November of 2005 from cancer. Shortly after Dee's passing, Butterfly Pavilion was able to create an education endowment through a generous gift from Ned and their friends in her honor. This endowment supports education programs and scholarships for the young and old alike to enjoy environmental education. We are happy to announce that this generous endowment established with Ned's support will be matched in 2014 with a recent major gift of \$50,000.00. Combined, these two gifts will leave a legacy for visitors to enjoy Butterfly Pavilion for decades to come.



In addition to the endowment, Butterfly Pavilion remembers Dee and all that she contributed through The Dee Lidvall Discovery Garden. In 2007 in collaboration with Ned, his family and friends, and many other generous supporters, Rock Bottom Foundation and Butterfly Pavilion designed, developed, and installed The Dee Lidvall Discovery Garden. This quintessential outdoor education landscape serves tens of thousands of visitors each year through classes, workshops, and demonstration gardening. The Discovery Garden has also become home to Butterfly Pavilion's holiday lighting event Living Lights.

Ned currently resides in Atlanta, GA, with his wonderful wife, Melody, and is the President and CEO of Eat Here Brands, L.L.C., which includes the world famous Five Guys Burgers and Fries. Although no longer a Colorado resident, Ned remains one of Butterfly Pavilion's most loyal and dedicated donors and continues to serve as a great friend and mentor to Patrick, our CEO.

We owe so much to Ned and Dee and all that they have inspired and established at Butterfly Pavilion. Through the endowment and the Dee Lidvall Discovery Garden, their contributions will benefit our local and global communities for generations to come. \*

## 2012 Volunteers/Service Hours

### 30 hours

Adey Abebe  
 Josh Billups  
 Caitlan Book  
 Caleb Cook  
 Gloria Cordova-Arguello  
 Dan Fick  
 Richard Fink  
 Mike Garcia  
 Chris Graff  
 Amy Gray  
 Elisa Gray  
 Andrew Harding  
 Ivory Hicks  
 Linda Hicks  
 Leah Huey  
 Semaye Johnson  
 Tiffani Johnson  
 Carol Jones  
 Laura Luttrell  
 Teresa Matthews  
 Michael McKibben  
 Gloria Medina  
 Crystal Muas  
 Alyssa Murphy  
 Barbara Nelson  
 Arianna Pacheco  
 DJ Piccone  
 Reiman Porras Cabezas  
 Michael Rediros  
 Tearra Seay  
 Mathew Sharples  
 Patricia Taylor  
 Christy Vetsch  
 Demonna Wade  
 Fred Wood, Jr.

### 100 hours

Emily Bertelson  
 Dori Cresanta  
 Megan Drobny  
 Rita Lehocky  
 Isaiah MacLean  
 Janis Samuelson  
 Mark Stevens  
 Lydia Sunder Raj

### 200 hours

Nate Huey  
 Bob Krugmire  
 Lydia McCracken  
 Joan Wallace

### 300 hours

Eileen Sthole  
 Jennifer Sutherland

### 400 hours

Martha Jones  
 Anita Liuzzi  
 Samantha Rose

### 500 hours

Vickie Marra  
 Fred Nadel  
 Suzanna Strunk  
 Fran Watson

### 600 hours

Janet Dills-Eve  
 Lori Harrison  
 Brandon Idelberger  
 Jerry Lieberman  
 Sherry Rubinstein  
 Jeremy Sunder Raj  
 Maureen Tooher

### 800 hours

Laura Breland

### 900 hours

Sherry Ruby  
 Diane Saucier  
 Pat Spetz

### 1000 hours

Peggy Noguera  
 Pat Tennant

### 1100 hours

Andrea Shelby

### 1200 hours

Alice Doyle

### 1300 hours

Rich Jarboe  
 Cheryl Patrick

### 1400 hours

Virginia Hokenson

### 1500 hours

Cathy Fennelly  
 Gary Gagnon

### 1600 hours

Paul Bay  
 Bunny Kleinhenz

### 1800 hours

Mike Sipes

### 2100 hours

Dave Sherman

### 2300 hours

Annemarie Garza  
 Lora Kreutzer

### 2800 hours

Ernie Merkel

Thank you  
**Volunteers!**

# Board of Directors

2012

**Tracey Bennett**  
CHAIR

**Kevin Medina**  
VICE CHAIR

**Larry Dubois**  
FORMER CHAIR

**Bob Briggs**  
SECRETARY

**Todd Benson**  
TREASURER

**Lisa Edwards**

**Jon Hansen**

**Peter Harnisch**

**Sarada Krishna**

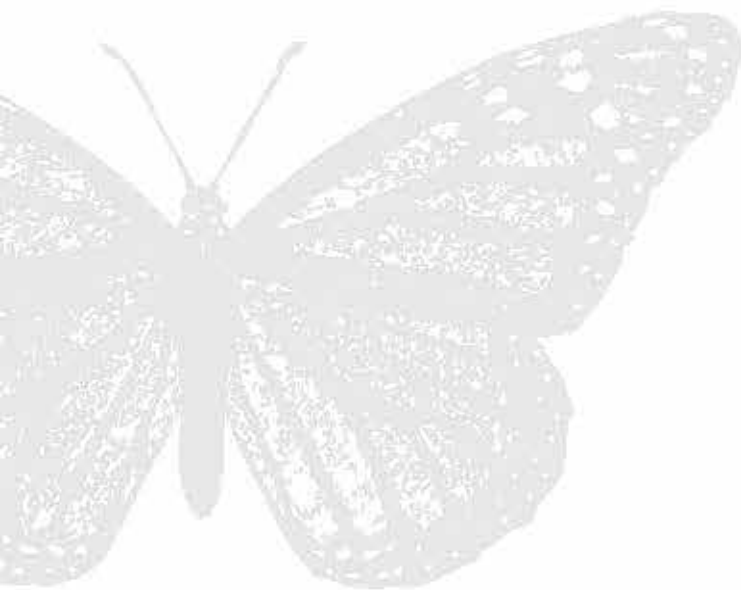
**Mike Lewter**

**Rob O'Dea**

**Tammy Stewart**

**Sarah Farley**

**Anne Macomber**



## MEDICINAL

*The U.S. National Cancer Institute has identified 3000 plants that are active against cancer cells. 70% of these plants are found in the rainforest.*

*Did you know?*

*25% of the active ingredients in today's cancer-fighting drugs come from organisms found only in the rainforest.*



# Scientific Advisory Board

2012

## Robert Hancock, Ph.D.

Department of Biology  
Metropolitan State College of Denver

## Paula Cushing, Ph.D.

Curator of Entomology and Arachnology  
Denver Museum of Nature and Science

## M. Deane Bowers, Ph.D.

Professor and Curator of Entomology  
University Museum, University of Colorado

## Paul Opler, Ph.D.

Department of Bioagricultural Sciences  
and Pest Management  
Colorado State University

## Boris C. Kondratieff, Ph.D.

Department of Bioagricultural Sciences  
and Pest Management  
Colorado State University

## Frank T. Krell, Ph.D.

Curator of Entomology  
Denver Museum of Nature and Science



## TEA

*Tea is almost exclusively hand picked  
and leaves must be picked carefully.  
Too big they are too tough; too small  
they are not economically viable.*

### *Did you know?*

*There are two main varieties  
of tea plant: the small-leaved  
China plant and the large-  
leaved Assam variety,  
discovered on the  
Burma-India  
border in 1824.*



# Butterfly Pavilion

## Staff 2012

### Executive Team

**Patrick Tennyson**  
PRESIDENT AND CEO

**Mary Ann Hamilton**  
V.P. SCIENCE AND  
CONSERVATION

**Lauren Nicole Bickford**  
V.P. PROGRAMMING  
AND EXHIBITS

**Leandra Lipson**  
V.P. RESOURCE DEVELOPMENT

**Jessita Clark**  
V.P. VISITOR SERVICES  
AND OPERATIONS

### Administration

Kristl-Michele Howard  
Rachael Kras  
Glenalee Nozawa

### Curatorial

Amanda Accamando  
Melissa Fantin  
Chad Haines  
Ashley Jostes  
Amanda Ladigo  
Amber Partridge  
Lois Rosenquist  
Kristina Schaad  
Anthony Steck  
John Tyler  
Madeline Wilson

### Education

Julie Bainbridge  
Deborah Brooks  
Marissa Copan  
Sally Duke  
Nathan Dvorak  
Kathryn Eckhardt  
Sarah Folzenlogen  
Lisa Mount  
Dorothy Myers  
Joanna Sintek  
Bridget Skenadore  
Gwendolyn Tenney  
Edwin Teran  
Jordan Thede  
Khanh Whiteman

### Exhibits

Melissa Barton  
Julia Calle  
Elizabeth Cardenas  
Alex Gray  
Molly Knudsen  
Douglas Lipke  
Zachary Trabold

### Fund Development

Miranda Graul



## Gift Shop

Brittney Adams  
Natali Andrade  
Kari Cunningham  
Karen Ellefson  
Emma Farmer  
Cynthia Killingbeck  
Charity Krummich  
Caitlin Lloyd  
Deanna Pierce  
Kory Smathers  
Elizabeth Smith  
Elizabeth Vail  
Pamela Wippel  
Ariana Yong

## Horticulture

Joseph Barry  
Sharon Haan  
Breanna Seeger  
Amy Yarger

## Marketing

Gail Neujahr

## Membership

Sabrina Orlando

## Operations

Patrick Dazevedo  
Justin Deines  
Zachary McPherron  
Gary Wilkinson

## Private Events

Amber Davies  
Ashley Garbin  
Rachel Ptaszek  
Ashlee Struble  
Shesna Volz  
Alexander White

## Visitor Services

Heather Bilek  
Rebecca Campbell-Howe  
Tiffany Debaca  
Katie Enwright  
Susan Enwright  
Romero Hairston  
Sara McIntosh  
Kelly Miller  
Sandra Mortenson

## Volunteer Program

Adam Fedyski  
Kristen Pohl



Thank you  
**Staff!**





6252 W. 104TH AVENUE | WESTMINSTER, CO 80020 | 303.469.5441 | WWW.BUTTERFLIES.ORG