



**BUTTERFLY PAVILION**   
ANNUAL REPORT  
**2014**



# CONTENTS

- 2 2014 Mission Impact
- 5 Sustainable Scholarships
- 7 2014 Highlights
- 8 Financials
- 10 Pioneer Award
- 12 Donors & Supporters
- 14 In-Kind Contributors
- 17 Volunteers
- 18 Board of Directors
- 19 Scientific Advisory Board
- 21 Staff



LETTER FROM THE  
PRESIDENT & CEO  
Patrick Tennyson

Dear Friends,

Our choices, no matter how small or seemingly insignificant, are in reality, cumulative. Added all together our choices can make a difference, have an influence, or alter a direction.

For 19 years, Butterfly Pavilion has been providing educational opportunities and hands-on connections with some of the smallest but most important species on the planet. We create immersive experiences that connect our guests intimately to nature and help to positively shape the choices we all make regarding the world in which we live.

As a guest, member, supporter, or donor, it is a magnificent time to share in the wonder and impact of Butterfly Pavilion. In 2014, we took some strategic leaps forward. We have positioned Butterfly Pavilion to continue to expand its current influence on our community as we look forward to tomorrow with deliberate focus on more regional, national, and international influence. Although the immediate financial investment was significant, the value and return will be realized for decades to come.

This last year Butterfly Pavilion achieved one of the highest honors that can be attained by an organization of our kind. In September, we were granted accreditation by the Association of Zoos and Aquariums (AZA). AZA is a nonprofit organization founded in 1924 that is dedicated to the advancement of zoos and aquariums and strives to raise the professional standard in order to influence the development of only superior zoological parks and aquariums around the world. Accreditation by the AZA reflects the rigors of professional assessment that Butterfly Pavilion has conducted to ensure the highest standards in animal care and welfare, wildlife

conservation, scientific research, and educational programming. We are only the second invertebrate zoo and the first stand-alone butterfly house in the world to achieve this honor. We are extremely proud to help professionally advance invertebrate research and education, species survival plans, and invertebrate breeding initiatives, and we look forward to doing so in collaboration with some of the finest zoological facilities around the world.

Also in 2014, Butterfly Pavilion launched into a 14-month master planning effort that called for a significant strategic dive into facility analysis and impact evaluation of our mission-based efforts to date. The process was led by WDM Architects, based in Wichita, Kansas. The overarching project was a concept design for a new, improved facility, expanding our current capacity to serve our education, conservation, and research efforts as well as our services and amenities to guests, schools, and our entire stakeholder population. It was then built out in a comprehensive plan addressing most aspects of business from our programs and exhibits to marketing and our brand, our fund development pathway, sustainability goals, and of course our physical footprint. This plan provides tremendous insight on what Butterfly Pavilion will become over the next decade and the road map on how we will achieve it. The best part is that through this master planning process, we as an organization have realized that the risk of having impact of global significance is far less painful, scary, or intimidating than simply maintaining the status quo. Exhilarating is an understatement in regards to this plans implications!

Today and well into the future, Butterfly Pavilion remains very committed to improving Denver Metro Area communities through our programs, projects and outreach efforts. From our Senior Habitat Gardening program and our Open Space Restoration efforts, to our vital support of schools through on-site and outreach classes, we

understand now, more than ever, that there is a critical need for our work. We realize the long-term impact our work has on the Front Range community. For example, in 2014 we expanded our investment in the Sustainable Scholarships Program. Through the support of very generous donors we not only measurably expanded our scholarship endowment for the future, but also through day to day support we were able to award over \$21,000 in school group and field trip scholarships to help over 10,200 underserved, disadvantaged students and residents. Our supporters understand and champion that through this investment we provide life-long change in the way children and adults view the natural world, planting the seed of environmental stewardship and conservation for generations to come. We are committed to ensuring socio-economic status is NEVER an obstacle to connecting to the natural world!

Butterfly Pavilion has provided nearly 5.5 million visitors with hands-on learning experiences and nearly one million school children have visited Butterfly Pavilion for educational field trips. As we head into our 20th year of existence, we have begun planning for the next 20 years of growth. We are committed to serving as one of Colorado's most recognized and socially responsible science education facilities.

We have very high expectations, and we continue to make the appropriate investments to ensure our contributions make a difference, have an influence, and alter a direction important to the world in which we live.

I thank you for your continued support and your investment in all that we do!

Sincerely,

**Patrick Tennyson**  
President and CEO  
Butterfly Pavilion







## Butterfly Pavilion Accomplishments

In the 19 years Butterfly Pavilion has been in existence, we have provided nearly 5.5 million visitors with hands-on educational experiences.

Since 2002, Butterfly Pavilion has planted butterfly habitat gardens at 43 senior centers across the Front Range, providing nearly 3,000 seniors with outdoor opportunities and creating more places for native bugs and butterflies to call home.

Butterfly Pavilion delivered the Growing Scientists program for its 11th year, serving 1,500 low income students and families, 61 teachers, and 7 schools.

In 2014 we flew **29,672** butterflies and moths and 170 different tropical species.

## Scientific Highlights

We imported pupae investing over \$80,000 in the sustainable business practice of butterfly farming, which provides a fair trade income to people in the tropics, keeping the rainforest intact and contributing to global conservation efforts. Our Curatorial team made more than 1,000 animal identifications, helping educate the community about the invertebrates in our area.

ACCREDITED BY THE **ASSOCIATION OF ZOOS & AQUARIUMS**

In 2014 Butterfly Pavilion became the first stand-alone invertebrate zoo to become AZA accredited!

Colorado Butterfly Monitoring Network increased from 7 sites in 2013 to 47 sites in 2014, a 571% increase. This work identifies butterfly trends and supports educated land management practices.

We installed Plains to Peak native Colorado garden, a previously undeveloped part of Butterfly Pavilion's landscape. It became a terraced native plant garden, showcasing the state's diverse and beautiful flora.

## Education Highlights

- We served 46,913 school children through onsite class visits and outreach programs, helping children learn important concepts like ecosystems and food chains.
- \$21,846 was awarded in field trip and class scholarships, helping 10,208 students.
- We led teacher enrichment classes providing 215 professional educators with Colorado State Model Content Standards for the Life Sciences (K-12).
- 367 children enjoyed Butterfly Pavilion camps about bugs, plants, marine life, and more.
- We served 1,758 adults through programs that appeal to the lifelong learner in all of us.
- We had over 46,357 attendees at our free, classroom-based "Spineless Spotlight" programs, providing every visitor with the opportunity to interact with leaders in environmental education.
- Butterfly Pavilion became a SOLE (Students in Outdoor Learning Environments) partner with the Colorado Division of Parks and Wildlife, and served several hundred students and their families with outdoor education programs.
- We developed a new 9-week afterschool program for Centennial Elementary, consisting of three 9-week sessions for K-2 and 3-6 grade students.



## Community Highlights

Butterfly Pavilion awarded 210 fellow nonprofit organizations each a donation of four in-kind admission tickets, which equates to \$7,980 of support to enhance their fundraising efforts.

Our volunteers provided 20,437 hours of community service, which is the equivalent of 10 full-time employees!

We saw nearly **14,500** attendees at our five major public events

Bugs We Love, Bloomapalooza, Insectival, Bug-A-Boo, & Living Lights

These special events appeal to visitors across a broad spectrum of age groups and demographics while carrying a strong conservation message.



## Mission

Our mission is to foster an appreciation of invertebrates while educating the public about the importance of conservation of threatened habitats in the tropics and around the world.

## Vision

We believe that an appreciation of the environment begins with an appreciation of all living things. Every day we teach the young and old alike about the need for conservation, because with knowledge and empowerment we will protect the world's natural habitats for generations to come.



# SUSTAINABLE SCHOLARSHIPS

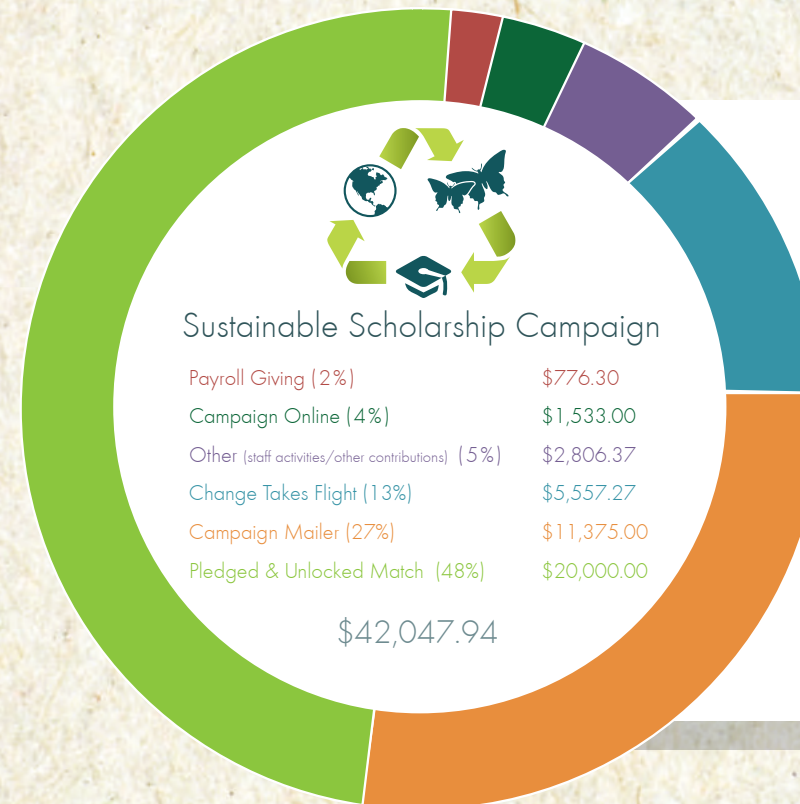
Give today. Guarantee tomorrow.



## Sustainable Scholarships

In 2014, Butterfly Pavilion's capital campaign focused on sustainable scholarships to support the Invertebrate Access Fund, the first entry to nature experiences for thousands of high needs children. Butterfly Pavilion's Invertebrate Access Fund is available to all people in need of financial assistance to attend a program at Butterfly Pavilion. School audiences are the primary recipients of scholarship assistance, and over 10,000 students were supported through reduced or no program

costs in 2014. In addition, several children from individual families have attended school break programs through fund assistance. Recipients of these funds have had the opportunity to hold Rosie, walk through a rainforest, touch a sea star, and experience a Colorado ecosystem on the Big Dry Creek Nature trail. They use science process skills like observation and classification, and play games about food chains, predator prey relationships, and much more.



"I saw a lot of cool, cool bugs. My family will have a good, good time there. They will want to come each day. I think you all are so awesome. You all are so nice."


~ Your friend, Dominique





# 2014 Highlights

Developed and installed  
**NEW**  
Interpretive stations and  
signage at  
Big Dry Creek  
and Wings of the Tropics




Served  
**10,208**  
low income and  
underserved students  
through general scholarships  
and transportation  
(\$21,846 in scholarship  
expense, \$2.14 per student)



Over 50% new summer, fall, and  
winter camps increased revenue by  
**\$13,000**

Conducted spineless spotlight programs like  
butterfly release, Ask Rosie, story time, and  
Rainforest Rambles for **46,000** individual guests



Provided educational  
programming for  
**46,913**  
school age children

## PARTNERSHIPS

- Continued our Growing Scientist program for its 11th year (1,500 low income students and families, 61 teachers, and 7 schools served).
- Became a SOLE (Students in Outdoor Learning Environments) partner with the Colorado Division of Parks and Wildlife. Served several hundred students and their families with outdoor education programs.
- Developed a new 9-week afterschool program for Centennial Elementary: Three 9-week sessions for K-2 and 3-6 grade students.
- Continued our Compass Afterschool program, adding a new middle school component.

## BY THE NUMBERS 2014

Spineless Spotlights:	46,357
Number of School Age Visitors:	46,913
Self-Guided Student Tours:	9,488
Classroom Program Visits:	21,118
Outreach:	653 programs 15,214 participants
Summer Nature Encounters:	726 out-of-school students
Camps:	367 school age children
Teacher Professional Dev.:	215 teachers
Adult Programs:	1,758 adults



**2014 REVENUES \$3,394,380**

**2013 REVENUES \$3,243,966**

## BUTTERFLY PAVILION

Statement of Financial Position December 31, 2014

<u>ASSETS</u>	<u>2014</u>	<u>LIABILITIES</u>	<u>2014</u>
Cash and Cash Equivalents	\$665,489	Accounts Payable and Accrued Expenses	\$159,683
Certificates of Deposit	\$200,000	Deferred Revenue and Memberships	\$111,341
Accounts Receivable	\$21,226	Bond Payable	\$1,270,000
Prepaid Expenses	\$36,481	<b>Total Liabilities</b>	<b>\$1,541,024</b>
Inventory	\$210,581		
Beneficial Interest in Assets Held in Endowment	\$136,711	<b>NET ASSETS</b>	<b>2014</b>
Net Property and Equipment	\$3,785,430	Unrestricted	\$3,330,417
<b>Total Assets</b>	<b>\$5,055,918</b>	Temporarily Restricted	\$47,766
		Permanently Restricted	\$136,711
		Total Net Assets	\$3,514,894
		<b>Total Liabilities and Net Assets</b>	<b>\$5,055,918</b>

## ROCKY MOUNTAIN BUTTERFLY CONSORTIUM

Statement of Financial Position December 31, 2014

<u>REVENUE AND SUPPORT</u>	<u>Unrestricted</u>	<u>Temporarily Restricted</u>	<u>Permanently Restricted</u>	<u>Total</u>
Admission Fees	\$1,505,551			\$1,505,551
Memberships	\$190,139			\$190,139
Educational Program Fees	\$124,408			\$124,408
Outreach and Private Event Fees	\$136,607			\$136,607
Gift Shop and Concession Operations:				
Gross Sales	\$793,394			\$793,394
Less Cost of Sales	-\$352,434			-\$352,434
Contributions	\$67,893	\$91,338	\$10,000	\$169,231
In-kind Contributions	\$70,048			\$70,048
Scientific and Cultural Facilities	\$695,555			\$695,555
Special Event Income	\$76,529			\$76,529
Less Direct Expenses	-\$27,471			-\$27,471
Investment Return	\$2,102		\$2,500	\$4,602
Other Income	\$8,221			\$8,221
Transfers to Endowment		-\$23,811	\$23,811	\$0
Net Assets Released from Restrictions	\$63,272	-\$59,312	-\$3,960	\$0
<b>TOTAL REVENUE AND SUPPORT</b>	<b>\$3,353,814</b>	<b>\$8,215</b>	<b>\$32,351</b>	<b>\$3,394,380</b>

<u>Expenses</u>	<u>Unrestricted</u>	<u>Temporarily Restricted</u>	<u>Permanently Restricted</u>	<u>Total</u>
Program Services:				
Invertebrate Zoo and Research	\$1,224,706			\$1,224,706
Guest Experience	\$1,044,693			\$1,044,693
Education	\$390,870			\$390,870
<b>TOTAL PROGRAM SERVICES</b>	<b>\$2,660,269</b>			<b>\$2,660,269</b>
Supporting Services:				
Management and General	\$506,371			\$506,371
Marketing	\$337,559			\$337,559
Membership Development	\$24,888			\$24,888
Fundraising	\$151,795			\$151,795
<b>TOTAL SUPPORTING SERVICES</b>	<b>\$1,020,613</b>			<b>\$1,020,613</b>
<b>TOTAL EXPENSES</b>	<b>\$3,680,882</b>			<b>\$3,680,882</b>
<b>CHANGE IN NET ASSETS</b>				
Net Assets at Beginning of Year	\$3,657,485	\$39,551	\$104,360	\$3,801,396
Net Assets at End of Year	\$3,330,417	\$47,766	\$136,711	\$3,514,894





## PIONEER AWARD WINNER Bill Walenczak

The Pioneer Award is presented to an individual who has been instrumental in the success of Butterfly Pavilion.

**B**ill Walenczak graduated from Michigan State University with a BS in Landscape Architecture in 1969, served 3 ½ years in the U.S. Coast Guard, then received his MLA (Master of Landscape Architecture) at the University of Michigan. He worked for the City of Southfield in Southfield, Michigan, from January 1985 to March 1990 as the Deputy Director of Parks & Recreation.

In 1990, Bill and his family moved to Westminster, Colorado, where Bill accepted the position of Director of Parks, Recreation, and Libraries for the City of Westminster, where he served until his retirement in May of 2012. He was the recipient of many awards in his field and the City of Westminster received the National Gold Medal in Parks & Recreation in 1991 and 1999 under his leadership.

He also participated in the Westminster Rotary clubs from 1994-present. He has been married to his wife Carolyn for 44 years, and has two sons, Jeff and Matt; a daughter-in-law, Christy; and three grandsons Jack, Luke, & Blake.







# Donors & Supporters

## FOUNDATION & CORPORATION

**\$20,000**

Community First Foundation

**\$15,000**

Anschutz Foundation

**\$10,000**

Mabel Y. Hughes Charitable Trust

**\$5,000**

Colorado Garden Foundation

New Belgium Brewing

**\$3,750**

Patagonia

**\$3,500**

Scientific Cultural Collaborative

**\$2,500**

The Broomfield Community Foundation

**\$2,000**

Nathan B. and Florence R. Burt Foundation

The Denver Foundation

**\$1,250**

Odell Brewing Company

**\$1,000**

Kinder Morgan

Westminster Legacy Foundation

**Under \$1,000**

Xcel Energy

The Cady Foundation

Boettcher Foundation

## INDIVIDUALS

**\$15,000**

Jim Brownlie

Anonymous

**\$5,000**

Chrissy Lefler

Mary Ann Hamilton

Carla Larson

Fred & Mary Lynn

Bangs

Patrick Tennyson

Jim Hall

Will Murray

Rob O'Dea

**\$2,500**

Gary Jamell

Richard Jarboe

Tracey Bennett

Jeff & Kim Finnin

**\$1,500**

Deven Eastridge

Bob Jenkins

Shaun Swistak

Chris Laschinger

Kevin Medina

**\$1,000**

Lisa & Stephen

Storey

John & Sarah Farley

Joel Cox

Mark Pino

Mark & Molly

Wallace

Jennelle Ertl

Richard Male

Dick & Marea Yoswa

Janet Dills-Eve

Donald Tripp

Deanna Pierce

Dianne Centrella

Martin Lanik, PhD

Mike & Karen

Lewter

Tammy & David

Stewart

Mary Joy Barajas

Linda Strachan

Shelby Hood

**\$500**

Dawn Barnard

Gary LaPlante

Leticia Overholt, MD

Darrick Deslatte

Paul Pelican

Alec Day

Fred Yahrting

Scott Oelker

Mary Lindsey

Katie Camarca

Patty Martillaro

Robin Slutsky

Tom Frenzel

Marissa Copan

Sarada Krishnan

Miranda Graul

Amber Cox

Jody Deschenes

John Andrews

**\$250**

Gregg Bradbury

Dilek Eccles

John Carpenter

DeVonna Glasspoole

Bob Herndon

Wilson Porterfield

Deborah Roth-Bush

Sally Vander Veer

Bob & Shirley Briggs

Christy Kline

Janie Flores

Dennis Garcia

Dave Greenagel

Kent Hansen

Brad Hoben

Ryan Iguthi

Deborah Obermeyer

Janis Samuelson

Daryl Smith

Korey Snider

Steve Woods

Trisha Litz

Becky Peterson

Bill Christopher

Bonnie Montoya

Polly Andrews

Walter & Mary Lynn

Copan

Roberta Burns

Jessy Clark

Cari Deslatte

Rick Rolph

William Bernstein

Jennifer Fischer

M.D. Kinoti

Samantha Slater

Patricia Pundsack

**\$100**

Marilyn Carpenter

Mary Chady

Debbie Greenagel

Francis Haas

Lori Harrison

Alicia Hoegh

Boris Kondratieff

Karen Layfield

Linda A. Leadbetter

Fred Nadel

Emma Pinter

Robert Powers

Rosemary Rochford

Kathryn Spuhler

Frenzel Thomas

Bill Walenczak

Priscilla Walker

Mike Yankovich

Amy Yarger

Tom Yoswa

Gretchen Kerr

Tiffany Christianson

Kathy Pugh

Dan Bauer

Beth Ronsick

Elanie Torres

Michael Vella

Faith Winter

Jay Cordes

Anita Seitz

Mary Tilger

Andy Clarke

Julia Stoumbaugh

Mindy Clawson

Amber Partridge

Ben Apple

Rachel Beard

James Bisogno

Curtis Bohnsack

Bruce Clark

Carol Cochran

Ilene Dubey

Paul Follmuth

Frank Fransioli

Mary Freas

Dianne Gilbert

Cheryl Givens

Joan Griep

Anne Hansen

Rebecca Koch

Jennifer Lawson

Dana Miller

Rachel Morgan

Dave Murray

Jim Neville

Michael Newman

Barbara O'Grady

Darlene Sargent

Chad Schneider

James Seavey

Lisa Seigal

Rob Wivchar

Kim Spence

Catherine Vitarelli

Nick Zimmer

Samuel Francis

Gerald Gasper

Alice Norris

Shirley Cervene

Clark Griep

Bruce Haefner

Adam Johnson

Edward Karg

Rosalee Sarell

Mike Shelton

Matthew Anderson

Karen Ashbaugh

William Bangs

Dave Bauer

Maria Bloomfield

Jennifer Brandon

Darlene Britton

Phyllis Brown

Carla Bush

Kathy Connors

Laura Cordes

Brad Damratoski

Debra Deverell

John Doucette

Larry Dubois

Nancy Duffy

Bette Erickson

James Flint

Shirl Garcia

Nancy Gire

Richard Goldberg

Laurie Goldey

Mariska Hamstra

Ruby Howard

Alleta Johnson

Jane King

Gwen Kochman

Michelle Kubik

Linda Lawson

Michele Lehman

Sharon Lehrman

Nancy Lind

Leandra Lipson

Terese Manley

Melissa Mooney

Keith Moulin

Karen Newcomb

William Nicholson

Jacqueline Parisi

George Peterson

Joel Richards

Brooke Sanders

Dedmon

Leslie Secrist

Sharon Siegel Ptaszek

Mary Ann Starnes

Robert Thompson

Chris Webster

Barbara Wyatt

Kay Zerbel

Joe Barry

Mary Ann Pierce

Owen Ryan

Jeanine Salewski

Jennifer Grathwohl

Valerie Rohrbach

Clair Tralles

Dustin Bush

Melissa Hart

Diane Henderson

Karyn Inouye

Garey Inouye

Marc Inouye

Wendy Inouye

Carrie Lyons

Tara Warren

Gregory Rasmussen

Elizabeth Lowe

Sharon Armbrust

Heather Baxter

Jordan Bills

Michelle Buan

Blake Collins

Sam Epperly

Bianca Ferguson

Joseph Gaida

Josephine Herder

Jacqueline Kazimer

Danielle Long

Ann Mushinsky-

Tralles

Theresa Nikodym

Rachel Ptaszek

Anita Thomaston

Shesna Volz

Taylor Bush

Logan Boyd

Doria Barajas

**THANK  
YOU  
FOR YOUR  
SUPPORT**





## IN-KIND COMPANY CONTRIBUTORS

- |   |                                       |   |                                |   |
|---|---------------------------------------|---|--------------------------------|---|
| 3 Sons Italian Restaurant & Bar           | City of Westminster Public Library    | Enstrom Candies                         | KPTT-FM                        | Distributing Company                        |
| A Spice of Life Catering + Events         | Clear Channel KPPT-FM                 | ESPN Denver                             | Kriser's Natural Pet           | Rock'n & Jam'n                              |
| Adams Mystery Playhouse                   | Coloradical                           | Etsy Crafts                             | Larimer Associates             | Rocky Mountain Anglers                      |
| Alamo Drafthouse Cinema                   | Colorado Children's Chorale           | Family Game Night                       | Life Cycle Balloon Adventures  | Royal Gorge Route Railroad                  |
| Alpha Graphics                            | Colorado State Beekeepers Association | Fins to Feathers Wildlife Art           | Lighthouse Writers Workshop    | Scrumptious                                 |
| AMC Highlands Ranch 24                    | Colorado Symphony                     | Fiske Planetarium                       | LiveWell Colorado              | South of Colfax Nightlife District          |
| AMC Theaters                              | Colorado Tan                          | Flatiron Crossing Mall                  | Lodge Casino                   | Springhill Suites by Marriott               |
| Arapahoe Basin                            | Comedy Works                          | Front Range Gardens                     | Long Sales Group Inc.          | Standley Lake Marketplace Liquors           |
| Arvada Center for the Arts and Humanities | Comfy K9                              | Ganz                                    | Loveland Museum / Gallery      | Susan M. Duncan Family YMCA                 |
| Avid4 Adventure                           | Concept Restaurants                   | Georgetown Loop Railroad                | Mary Jane McKitis & Associates | Swallow Hill Music Association              |
| Bar Louie Westminster                     | Cook Street School of Culinary Arts   | Golden History Museums                  | Massage Envy Spa               | Tagawa Gardens                              |
| Barbara's Bakery                          | Corepower Yoga                        | Golf Westminster                        | Mike's Camera                  | The Colorado Chautauqua Association         |
| Basecamp Explorer                         | Curious Theatre Company               | Gusto Studio Booth                      | Miners Alley Playhouse         | The Gourmet Kitchen                         |
| Bass Pro Shop                             | Dakota Bees                           | Hamburger Mary's Bar & Grille           | Mouco Cheese Company           | The Home Depot                              |
| Beau Jo's Pizza                           | David Burton Artwork                  | Hideaway Steakhouse                     | Noodles & Company              | The Wildlife Experience                     |
| Becky Silver Art                          | Denver Ballroom Dancing               | High Plains Drifters Fly Fishing Club   | Odell Brewing Company          | Thin Ice Productions                        |
| Bhakti Chai Brewery                       | Denver Botanic Gardens                | History Colorado                        | Original Source                | Tiller's Kitchen & Bar                      |
| Bicycle Village                           | Denver Center for the Performing Arts | Hogan Reps Thirsty Store                | Panera Bread                   | Timbuk Toys                                 |
| Big Choice Brewing                        | Denver Community Acupuncture          | Howl at the Moon                        | Parker Ace Center              | Town and Country Foods                      |
| Blake Street Tavern                       | Denver Film Society                   | Hudson Gardens                          | Pearl South Padre              | Town Hall Arts Center                       |
| Boulder Museum of Contemporary Art        | Denver Firefighters Museum            | Hyland Hills Park & Recreation District | Perfect Pea                    | Veda Salon and Spa                          |
| Breckenridge Distillery                   | Denver Marriott Westminster           | Imagination Gardens by Vick             | PetSmart                       | Vicjon Enterprises Inc                      |
| Brewers Association                       | Denver Museum of Nature and Science   | Isle of Capri Casinos                   | Pilgrim KCNC                   | Wings Over the Rockies Air and Space Museum |
| Butterfly Pavilion                        | Denver Zoo                            | IT SuperVision                          | Pilgrim KDVR                   | Wonderland Brewing Company                  |
| Candlelight Ambiance                      | DJ's Jams                             | Jack and Jill Children' Salon           | Pilgrim KIMN-FM                | Wynkoop Brewing Company                     |
| Canine Fitness & Fun Center               | Downtown Aquarium                     | Jennifer Rodehaver, CPD                 | Pilgrim KMGH                   | Yak & Yeti Restaurant & Brewpub             |
| Caribou Coffee                            | Eagle Trace Golf Club                 | Jonesy's EatBar                         | Pilgrim KPTT-FM                | Yankee Candle                               |
| Children's Museum of Denver               | Echter's Nursery & Garden Center      | Jumpin' Jordy's                         | Pilgrim KQKS-FM                |   |
| Cindy Meyers Co                           |                                       | King Soopers                            | Pilgrim KUSA KTVD              |   |
| City of Westminster                       |                                       | Kingdom Chariots                        | Pilgrim KWGN                   |   |
|   |                                       | KNCN                                    | Pilgrim KYGO-FM                |   |
|   |                                       |   | Plato's Closet                 |   |
|   |                                       |   | Que Bueno Mexican Grille       |   |
|   |                                       |   | Republic National              |   |

## IN-KIND INDIVIDUAL CONTRIBUTORS

- |                |                 |                    |                   |                 |                  |
|----------------|-----------------|--------------------|-------------------|-----------------|------------------|
| Ann Brown      | Amber Partridge | Michelle Rodenburg | Steven Silver     | Ruthie Horton   | Janet Duggan     |
| Angela Baldauf | Mary Lynn Bangs | Fran Watson        | Samantha Ortiz    | Daniel Nival    | Norman Frickey   |
| Hope Cardoza   | Jack Heimsoth   | Adrienne Miller    | Kristen McDermott | Kaya Bar-Evan   | Valerie Friedman |
| Greg Garcia    | Sarah Secrist   | Daniel Babb        | Tom Horton        | Victoria Carnes | Ian Meinert      |
|                |                 |                    | Hannah Powell     | John Chabot     | Joshua Wagner    |
|                |                 |                    |                   |                 | Lee-Anne Wise    |







# Volunteers/Service Hours 2014



### 30 Hours

David Jamiel  
Eric Olson  
Mikenna Wolff  
Wendy Fulks

### 50 Hours

Jacob Capps  
Dustin Casper  
Terra Garcia  
Shirley Jamiel  
Jacob Capps  
Jeremy Davis  
Donald Remalay

### 100 Hours

Barbara Brussell  
Virginia Cellars  
Sarah Eshbaugh  
Terra Garcia  
Angelica Hayes  
Dee King

### 200 Hours

Danny Fick  
Amy Gray  
Byron Hokenson  
Daniel Hollingsworth  
Teresa Matthews  
Patricia Taylor  
Mark Visel

### 300 Hours

Barbara Nelson  
Mark Stevens

### 400 Hours

Rita Lehocky  
Jennifer Sutherland

### 500 Hours

Anita Liuzzi  
Timothy Norling

### 700 Hours

Brandon Idelberger  
Fred Nadel  
Sherry Rubinstein

### 800 Hours

Kelly Bruno  
Stephen Chady  
Janet Dills-Eve  
Lori Harrison  
Vickie Marra  
Frances Watson

### 1,000 Hours

Diane Saucier  
Pat Spetz

### 1,100 Hours

Sherry Ruby

### 1,300 Hours

Laura Breland  
Andrea Shelby

### 1,400 Hours

Cheryl Patrick

### 1,600 Hours

Virginia Hokenson  
Richard Jarboe

### 1,800 Hours

Cathy Fennelly

### 1,900 Hours

Patricia Tennant

### 2,100 Hours

Bunny Kleinhenz

### 2,200 Hours

Gary Gagnon  
Mike Sipes

### 2,400 Hours

Paul Bay  
David Sherman

### 2,500 Hours

Lora Kreutzer

### 3,000 Hours

Ernest Merkel

### Interns

Mary Abramczyk  
Kate Alexander  
Daniel Barcelon  
Jamie Beggar  
Ashleigh Belfiore  
Jaclyn Best  
Dennis Buchholz  
Jeremy Davis  
Amanda Edwards  
Kacie Fitzgerald  
Beatrice Goetz-Lovejoy  
Jennifer Reeser  
Alicia Sprague  
Jack Vandever

### Mapleton Early College High School Interns

Donovan Brubaker  
Milan Cordova

Brendan Latimer  
Yadira Perez  
Lillian Perez-Massaro  
Maranda Medina  
Luis Ramos  
Bianca Rodriguez  
Paige Savell  
Shyann Smith  
Mayemi Teran Uribe

### Summer Teen Volunteers

Marina Ayala  
Teara Ben-Joseph  
Joshua Billups  
Jacob Capps  
Patrick Cline  
Caleb Cook  
Maddy Croy  
Savannah Cyr  
Meg Drobny  
Glenna Dyson-Roberts  
Sarah Eshbaugh  
Caroline Frenzel  
Alessandra Fullone  
Kimberly Fung  
Elisa Gray  
Maggie Grout  
Angelica Hayes  
Clayton Hall  
Sabrina Hall  
Talon Hall  
Clayton Hall  
Daniel Hollingsworth  
Raquel Hurrieta

Semaye Johnson  
Kiana Junior  
Wega Kinoti  
Stacey Lopez  
Sylvia Lupien  
Jasmine Li  
Zierra Lyons  
Gabriel Mansure  
Elizabeth (Elly) Maroney  
Isabel Masters  
Karen Munoz  
Samantha Pichler  
Valerie Roberts  
Jaquelyn Rodriguez  
Taylor Rogers  
Hanna Rupp  
Lauren Sides  
Noah Smith  
Lydia Sunder Raj  
Semaye Johnson  
Tyler Volpe  
Jacob Vasquez  
Queren Villalobos  
Joshua Volpe

### Volunteer Leadership Council

Rich Jarboe Chair  
Steve Chady Co-Chair  
Marina Ayala  
Virginia Cellars  
Janet Dills-Eve  
Cathy Fennelly  
Wendy Fulks  
Fred Nadel  
Pat Tennant



## BOARD OF DIRECTORS 2014

**Kevin Medina**  
Board Chair

**Tracey Bennett**  
Past Chair

**Rob O'Dea**  
Vice Chair

**Bob Briggs**  
Board Secretary

**Mike Lewter**  
Board Treasurer

**Sarada Krishnan**  
Board Member

**Tammy Stewart**  
Board Member

**Rich Jarboe**  
Board Member

**Martin Lanik**  
Board Member

**Michael Snider**  
Board Member

**Mary Lindsey**  
Board Member

**Faith Winter**  
Board Member

**Lisa Storey**  
Board Member



## SCIENTIFIC ADVISORY BOARD 2014

**Robert Hancock, Ph.D.**  
Metropolitan State College of Denver  
Department of Biology

**Paula Cushing, Ph.D.**  
Curator of Entomology and Arachnology  
Zoology Department  
Denver Museum of Nature and Science

**M. Deane Bowers, Ph.D.**  
Professor & Curator of Entomology, University Museum  
Department of Ecology & Evolutionary Biology

**Paul Opler, Ph.D.**  
Department of Bioagricultural Sciences and Pest Management  
Colorado State University

**Boris C. Kondratieff, Ph.D.**  
Department of Bioagricultural Sciences and Pest Management  
Colorado State University

**Frank T. Krell, Ph.D.**  
Curator of Entomology  
Zoology Department  
Denver Museum of Nature and Science

**Richard P. Reading, Ph.D.**  
Department of Conservation Biology  
Denver Zoological Foundation

**Cynthia Church, Ph.D.**  
Metropolitan State College of Denver  
Department of Biology







# Butterfly Pavilion Staff 2014

## Executive Team

Patrick Tennyson  
Polly Andrews  
Jessy Clark  
Mary Ann Hamilton  
Leandra Lipson

## Administration

Kristl-Michele Howard  
Jennifer Lawson  
Glenalee Nozawa

## Curatorial

Mary Abramczyk  
Dina Baker  
Ashleigh Belfiore  
Mindy Clawson  
Melissa Fantin  
Beth Kennicutt  
Amber Partridge  
Sarah Garrett Richards  
Lois Rosenquist  
Alicia Sprague  
Zachary Trabold  
Sarah Triplett  
John Tyler  
Joshua Wagner

## Education

Deborah Brooks  
Marissa Copan  
Patricia Devorak  
Nathan Dvorak  
Christine Leahy  
Lisa Mount  
Dorothy Myers  
Sarah Secrist  
Melissa Zyzda

## Exhibits

Kristin Fernandez  
Alex Gray

Katherine Kavulic  
Douglas Lipke  
Amber Parham  
Zachary Smith  
Joanna Wurst

## Fund Development

Karen Bliss  
Jay Cordes  
Robin Slutsky

## Gift Shop

Heather Bilek  
Jadrian Gamliel-Vis  
Vanessa Garcia  
Stephanie Golden  
Stephani Gurule  
Chanel Hill  
Jennifer Hord  
Marie Howard  
Cynthia Killingbeck  
Jason Mortenson  
Kevin Mortenson  
Kelley Nieser  
Deanna Pierce  
Megan Richards  
Virginina Sack  
Idalys Spear

## Horticulture

Joseph Barry  
Joseph Brown  
Sharon Haan  
Jack Vanderveer  
Amy Yarger

## Marketing

Stephanie Miller

## Operations

Logan Boyd  
Dennis Buchholz

Patrick Dazevedo  
Anthony Hopkins  
Jordan Thompson  
Shaun Swistak

## Private Events

Jordan Bills  
Andrew Chrapkiewicz  
Jacqueline Giggy  
Jennifer Grathwohl  
Chelsea Hird  
Jolie Keitel  
Jeremy Lawrence  
Tricia Manning  
Rachel Ptaszek  
Megg Sohn  
Clair Tralles  
Ashley Trotter  
Shesna Volz  
Savannah Weitzel

## Visitor Services/ Membership

Allison Ariatti  
Doria Barajas  
Colleen Christensen  
Kari Cunningham  
Ivy Deangelis  
Melanie Hatfield  
Rebecca Campbell Howe  
Janelle Inouye  
Julie Kazimer  
Sandra Mortenson  
Laura Perry  
Gregory Rasmussen  
Laura Strube

## Volunteer Management

Jonathan Grubbs  
Anna Leske







6252 W. 104th Avenue | Westminster, CO 80020 | 303.469.5441 | [www.butterflies.org](http://www.butterflies.org)