



BUTTERFLY
PAVILION

ANNUAL REPORT

2018



EMERGENCE

CEO AND CHAIRMAN LETTER *for 2018*

With a new internal infrastructure forged in 2017, Butterfly Pavilion emerged from its metamorphosis as a sophisticated, streamlined organization, beginning its new life with a new identity and a renewed emphasis on its core competencies – serving the worldwide community as the preeminent local, national and global hub for invertebrate knowledge, conservation, inspiration and connection.

In 2018, Butterfly Pavilion launched a capital campaign to build a new facility in Broomfield, Colorado that will be the jewel of the global invertebrate community and will inspire a new way of connecting to environmental conservation. This ambitious endeavor was met with immediate support and enthusiasm, as the community embraced our vision and stepped up to back our efforts. As one incredible indication of this support, Broomfield City Council voted 10-0 to approve a \$13 million contribution to this exciting project.

During 2018, our Pollinator Awareness through Conservation and Education (PACE) initiative reached an important milestone: Our goal was to serve 20 million pollinators by 2020. Through programs like the I-76 Pollinator Corridor, and our bee fencing project in Nepal, as well as through innovative partnerships like our portion-of-proceeds deal with Rice's Honey, we finished the year having served 22,500,000 pollinators!

While these programs increase our global impact and credibility, our primary pillar is still the kids we impact right here in our community. In 2018, Butterfly Pavilion served over 60,000 school kids through on-site and outreach programs, and provided over \$48,000 in scholarships so over 14,000 underserved kids could be exposed to the world of invertebrate conservation.



On top of all that, Butterfly Pavilion was certified as a Service Enterprise by the world's largest organization dedicated to volunteer service. And we launched a new brand, reflecting Butterfly Pavilion's status as an accredited zoological organization engaged in invertebrate research and conservation projects all around the world, our role as an educational institution, as well as the sentimental place Butterfly Pavilion occupies in the hearts of generations of Coloradoans as a cherished community and cultural asset. It also highlights the critical role invertebrates play as the foundation of virtually every ecosystem on the planet.

We invite you to join us as we take the next steps as a global leader providing a prosperous and environmentally-healthy tomorrow.

Patrick Tennyson, President & CEO

Rob O'Dea, Board Chair

MISSION

Butterfly Pavilion exists to foster an appreciation of invertebrates by educating the public about the need to protect and care for threatened habitats globally, while conducting research for solutions in invertebrate conservation.

VISION

Butterfly Pavilion is the premier invertebrate education, research and conservation institution in the world.

NEW BRAND

Butterfly Pavilion launched a new brand in 2018 that celebrates our accomplished history while highlighting the inextricable link between humans and invertebrates. As the first expression of this new look, a new website was launched that brings together vivid imagery, simplified navigation and an optimized mobile experience, better connecting the community to Butterfly Pavilion's mission and vision.

PREPARING TO TAKE FLIGHT



2018 marked the launch of Butterfly Pavilion's capital campaign to build its new 81,000 square foot, state-of-the-art invertebrate zoo and research center. The new facility is slated to open at the Baseline development in Broomfield, Colorado, in 2023. Kenny Monfort, Campaign Chairman, is leading our efforts to secure funding for this monumental project.

Planning has begun for the site, which will include a first-of-its kind Pollinator District—a smart landscape design that increases and enhances habitat for pollinators. Butterfly Pavilion's expertise in invertebrate research, habitat gardening and restoration, beekeeping and public education is informing this innovative model that will serve as a blueprint for sustainable living in communities around the world.

Butterfly Pavilion will share the Baseline campus with a K-12 STEM school championed by Adams 12 Five Star Schools and mindSpark Learning. With guidance from Butterfly Pavilion professionals, students will develop real world skills through scientific study and conservation research. Utilizing decades of combined experience in environmental education and research programming, Butterfly Pavilion staff will create a one-of-a-kind experience for these young learners.

“ I am proud to be leading Butterfly Pavilion's efforts to fund its new facility at the Baseline development. The vision for the new Butterfly Pavilion will not only impact our community but will have far reaching impacts across our country and around the globe. Engaging our local community in our efforts is our first priority, and I strongly believe that as our story spreads, we will connect with funders from around the country who see the vital need for leadership in invertebrate research and conservation.”

- KENNY MONFORT

Butterfly Pavilion Board of Directors Member and Chairman of the Campaign Steering Committee

ANIMAL CARE

THROUGH CUTTING-EDGE RESEARCH PROGRAMS, BUTTERFLY PAVILION IS A LEADER IN INVERTEBRATE SCIENCE, HAVING A DIRECT IMPACT ON THE SUSTAINABILITY OF INVERTEBRATE POPULATIONS.

BORN AT BUTTERFLY PAVILION *in 2018*



ASIAN MILLIPEDES
(Thyropygus pachyurus)

Butterfly Pavilion successfully bred **Asian millipedes** (*Thyropygus pachyurus*), a large species from Southeast Asia that can excrete a toxic substance from its body when threatened. To promote success, Butterfly Pavilion scientists created conditions that mimicked their natural environment, which is moist and filled with decaying leaves and wood.



GIANT DEAD LEAF MANTIDS
(Deroplatys desiccata)

Butterfly Pavilion successfully bred **giant dead leaf mantids** (*Deroplatys desiccata*). This large praying mantis is also native to Southeast Asia, where it hides in leaf litter, preying on unsuspecting small invertebrates. Eggs are laid in an “ootheca,” a foamy egg case that hardens over time and protects the fertilized eggs.



DOMINO COCKROACHES
(Therea petiveriana)

Butterfly Pavilion is proud to have a sustainable and healthy population of **domino cockroaches** (*Therea petiveriana*). These dynamic animals are native to southern India, where they are important detritivores, breaking down leaf litter and other decaying organic matter. The nymphs—or young cockroaches—do not display the striking domino-like black and white pattern that the adults do.

GOOTY SAPPHIRE ORNAMENTAL SPIDER
(Poecilotheria metallica)



The **Gooty sapphire ornamental spider** (*Poecilotheria metallica*) is a critically endangered tarantula found only in a 39-square-mile area of a highly disturbed forest within Andhra Pradesh, India. In addition to habitat loss, they are threatened by illegal collection for the pet trade because of their iridescent blue coloration. The Association of Zoos and Aquariums (AZA) selected Butterfly Pavilion to participate in the Species

Survival Plan (SSP) for this stunning animal. The SSP program selects AZA-accredited institutions to oversee the population management of select species with a goal to enhance their conservation worldwide. We currently have four sapphire ornamental tarantulas in our collection, two of which were given to Butterfly Pavilion by the Gibson family in memory of their beloved daughter, Lauren Gibson.

COASTAL DUNES PROJECT

Eureka & Arcata, CA

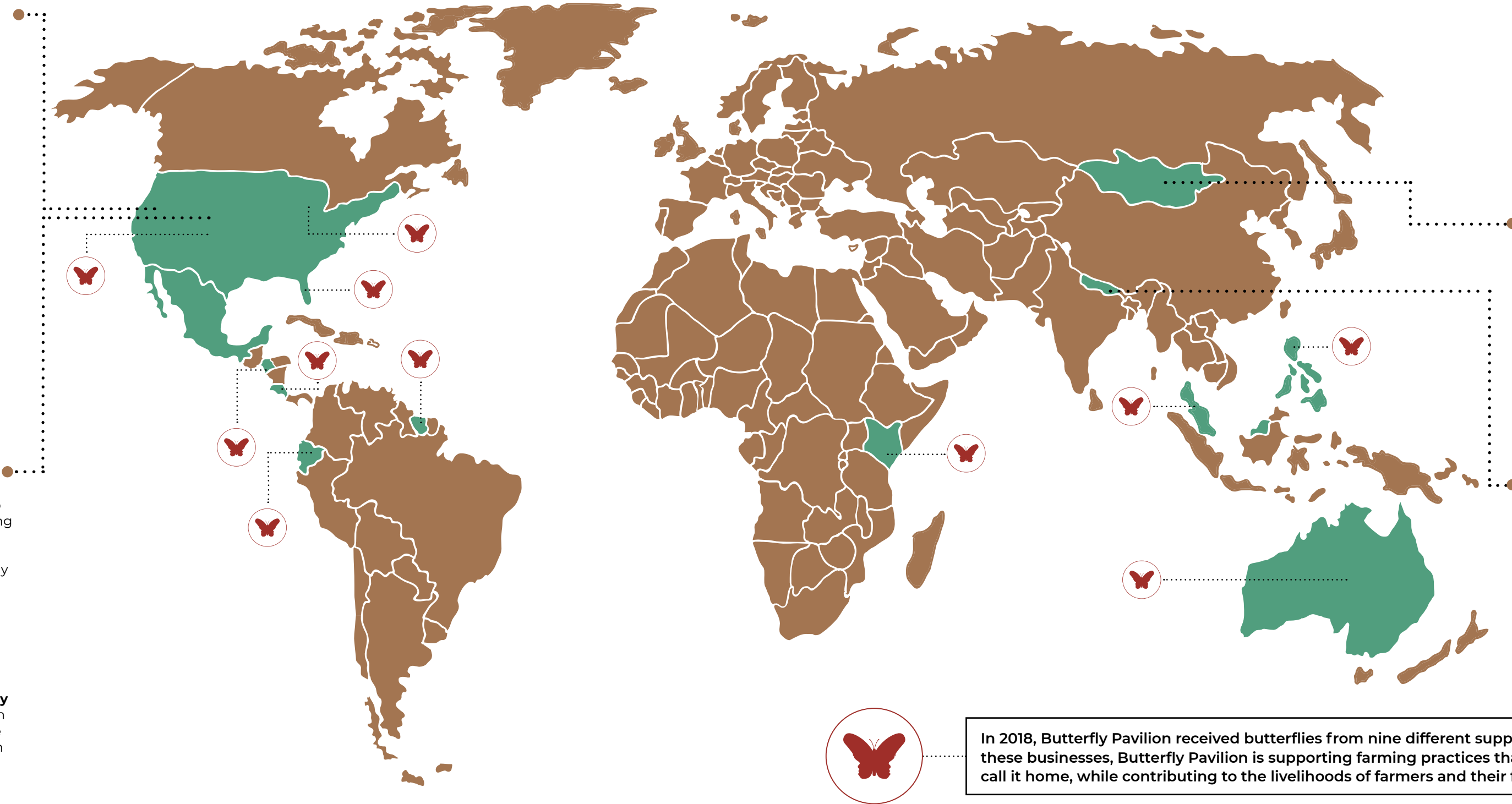
In 2018, Butterfly Pavilion researchers surveyed the impact of coastal dune restoration efforts on the health of invertebrate populations in northern California for the Bureau of Land Management. Researchers found a significantly higher number of invertebrates—particularly pollinators—on restored sites compared with unrestored sites. This important data will inform both local and federal conservation strategies going forward.



COLORADO

Multiple locations

In 2018, Butterfly Pavilion's 30,000-square-foot zoo featuring over 5,000 animals and hands-on learning experiences saw 331,882 visitors, and 9,474 guests visited the native butterfly house **Butterflies at Chatfield Farms**, a collaboration between Butterfly Pavilion and Denver Botanic Gardens. Butterfly Pavilion also launched the **Colorado Dragonfly Monitoring Project** to gather essential data on dragonfly populations, restored 63 acres and trained 36 Restoration Master Volunteers through the **Urban Prairies** project and trained more than 200 volunteers to observe and count butterflies from 120 field sites through the **Colorado Butterfly Monitoring Network**. Butterfly Pavilion also began seeding pollinator habitat along eight miles of the **I-76 Colorado Pollinator Highway** in collaboration with Colorado Department of Transportation and People and Pollinator Action Network.



GLOBAL CONSERVATION

BUTTERFLY PAVILION MANAGES PROGRAMS AND PROJECTS ALL OVER THE WORLD ACHIEVING GLOBAL IMPACT IN INVERTEBRATE CONSERVATION.



PARNASSIAN BUTTERFLY CONSERVATION

Tov Aimag, Mongolia

In June 2018, researchers traveled to Mongolia to work with colleagues from the Mongolian Academy of Sciences to explore possible sites for future Parnassius butterfly conservation, gathering data on 204 different Parnassius butterflies.

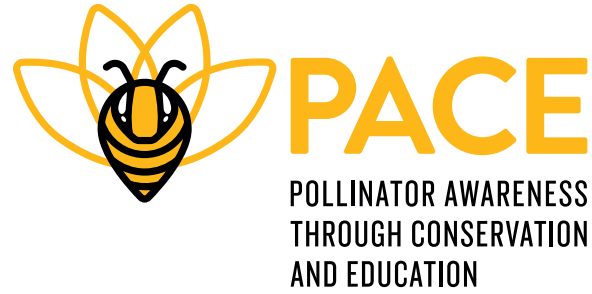
BEE FENCING PROJECT

Near Nepalgunj, Nepal

In 2018, Butterfly Pavilion experts traveled to Nepal to teach local community members beekeeping techniques to establish bee fences. Bee fences present an innovative, simple and natural solution to the challenge of human-elephant conflict. *Learn more on page 11.*



In 2018, Butterfly Pavilion received butterflies from nine different suppliers from around the world. By working with these businesses, Butterfly Pavilion is supporting farming practices that preserve the rainforest and the animals that call it home, while contributing to the livelihoods of farmers and their families globally.



From large agricultural crops to local vegetable gardens, pollinators are vital to human production of food sources and the reproduction of native plants. In fact, it's estimated that one out of every three bites of food eaten worldwide is the result of pollinators.

Pollinator populations—from bees to butterflies—are in decline because of habitat destruction, chemical pollution, parasites and pathogens. PACE is Butterfly Pavilion's global initiative to conserve these essential species. PACE projects span invertebrate research, habitat restoration, citizen science, sustainable butterfly and bee farming, educational opportunities and more.

20 MILLION BY 2020

Set a goal to serve **20 million** pollinators by 2020, and have far surpassed that goal, having served **22,500,000** to date!

POLLINATOR HIGHWAY

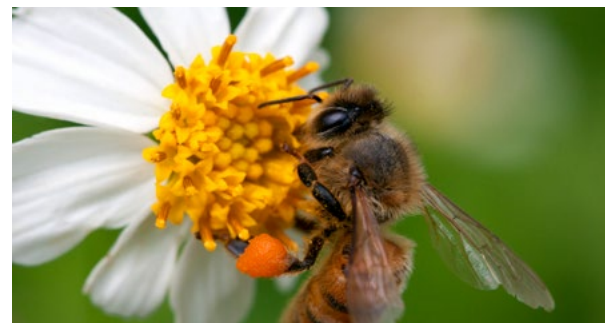
Began seeding pollinator habitat along **eight miles of the I-76 Colorado Pollinator Highway** in collaboration with Colorado Department of Transportation and People and Pollinator Action Network

63 ACRES RESTORED

Restored **63 acres** and trained **36 Restoration Master Volunteers** through the Urban Prairies Project

200 VOLUNTEERS

Trained more than **200 volunteers** to observe and count butterflies from **120 field sites** along the Front Range through the Colorado Butterfly Monitoring Network



LOCAL HIVE BY RICE'S HONEY PARTNERSHIP

In 2018, Butterfly Pavilion launched an exciting partnership with Local Hive by Rice's Honey, a leading honey producer of high quality, U.S.-only raw and unfiltered honey headquartered in Greeley, Colorado. The partnership's mission is to promote pollinators and sustainable bee farms across the country, and a portion of proceeds from every honey bottle sold is donated to Butterfly Pavilion's PACE initiative to protect the prosperity of pollinators worldwide.

PACE PROGRAM HIGHLIGHT



BEE FENCING PROJECT (near Nepalgunj, Nepal)

Rapid population growth in Asia has pushed Asian elephants to only 5% of the area in which they historically grazed. In this small area, humans and elephants are increasingly coming into conflict as elephants raid crops and break into buildings in their search for food. To protect their livelihoods, communities attempt to ward off the elephants through loud noises, shouting, threatening with fire, gunshots and other methods that have led to deadly conflict with these powerful animals. With only 30,000 Asian elephants remaining, it's urgent that we find a way to conserve them, while keeping people and their livelihoods safe.

Bee fencing provides an innovative, simple and natural solution that works for people, elephants and the planet. Elephants have demonstrated a natural fear of bees, and will communicate to other members of the herd when beehives are nearby. Bee fencing involves

connecting beehives by a tripwire around areas humans wish to protect. If elephants make contact with the wire, the hive is disturbed and guard bees emerge to defend the hive, causing elephants to retreat to avoid being stung. Communities that utilize bee fences can sell honey and other hive products, generating sustainable income. Bees in these hives pollinate the surrounding area, contributing to the health of agricultural crops and the local ecosystem. Beehives are also low-cost and can be built using locally-available materials.

In September 2018, in collaboration with the Katie Adamson Conservation Fund, Denver Zoo, Peace for Conservation and the Health and Environmental Management Society in Nepal, Butterfly Pavilion traveled to a community just outside of Nepalgunj, Nepal, adjacent to Bardia National Park, to train community members in proper beekeeping techniques. Young people from the community



attended training sessions and were eager to learn about beekeeping and how bees mitigate elephant raids. Butterfly Pavilion assisted them in inspecting the ten installed hives while teaching proper bee care, feeding and behavior.

“For the last 21 years I have been working with the largest animals at our zoo, but sometimes it is the smallest of invertebrates that can create some wonderful connectivity. Being able to work with the team at Butterfly Pavilion has escalated our impact on the planet immensely and I'm proud to be a part of that amazing team.**”**

– DAVE JOHNSON

Executive Director at Katie Adamson Conservation Fund and Zookeeper at Denver Zoo

EDUCATION

Butterfly Pavilion has occupied a special place in the memories of Coloradans for many years, due in no small part to the unique and meaningful experiences generated from our educational programming. Whether it's a trip to our zoo, an outreach program at a school or community center, a summer camp or distance learning program, our goal is for learners of all ages to leave inspired by invertebrates and their contributions to our world, along with newfound knowledge on the power they have to conserve them. Our success in this area stems from program design and content that is hands-on, innovative and inclusive.

“Denver Human Services is pleased to partner with the Butterfly Pavilion through the Explorer Pass program to both to ensure all children and parents in Denver have opportunities to explore, learn, and grow together, and to make sure more families have access to essential needs, like nutritious food. With our partners, we are on our way to creating a healthy community where each person is connected, supported, safe, and well.”

- DON MARES
Executive Director, Denver Human Services

60,364
SCHOOL-AGED LEARNERS
SERVED WITH
CURRICULUM-ALIGNED
CONTENT

6,800
ONLINE VIEWERS REACHED
THROUGH **DISTANCE**
LEARNING PROGRAMS

\$48,341
AWARDED IN
SCHOLARSHIPS,
REACHING
14,389
UNDERSERVED STUDENTS

2,103
FREE “SPINELESS
SPOTLIGHT” PROGRAMS
DELIVERED IN EXHIBITS TO
63,432
ATTENDEES

4,055
MEMBER HOUSEHOLDS
CONNECTED WITH
YEAR-ROUND
INVERTEBRATE EDUCATION
AND ENTERTAINMENT

2,862
DISCOUNTED ADMISSIONS
PROVIDED TO **SNAP**
CARD HOLDERS

1,548 KIDS ENGAGED THROUGH
HANDS-ON DAY CAMPS

Y CRAWL-A-SEE-EM PRESENTS SURVIVAL
In March 2018, Butterfly Pavilion opened a new exhibit highlighting how invertebrates hide, fight, move and feed to overcome the challenges of their environment, beating the odds to survive. The exhibit accommodates learners of all ages through interactive displays, technology and live animal encounters, including our beloved Rosie the tarantula.

Y MONARCH MIGRATION POLLINATOR WALL
In 2018, Butterfly Pavilion updated its Pollinator Wall exhibit to showcase the incredible monarch migration in which individuals fly from summer breeding grounds in Canada and the Northern United States to their overwintering grounds in California and Mexico.

Y DISTANCE LEARNING
With just a computer and high speed internet, Butterfly Pavilion connects learners around the world with science. In recognition of outstanding quality of education content and program delivery, Butterfly Pavilion was awarded its third Distance Learning program award, the 2017-2018 Pinnacle Award, by the Center for Interactive Learning and Collaboration.

Y AFTER-SCHOOL EDUCATION
Through grant assistance from Get Outdoors Colorado, Butterfly Pavilion provided after-school educational programming that connected young people in historic Westminster to nature and the outdoors. Students learned about their local ecosystems, participated in pollinator citizen science and more.

Y DIVERSITY, EQUITY AND INCLUSION
In 2018, Parker McMullen Bushman—Butterfly Pavilion's Vice President of Programs, Interpretation and Exhibits, and Inclusivity Committee Chair—launched an inclusivity workshop and discussion series that engaged staff, volunteers and more than 60 individuals from partner organizations in developing skills in cultural competency, inclusive communication and program delivery.



VOLUNTEER IMPACT

IN 2018, 665 VOLUNTEERS CONTRIBUTED 29,431 HOURS OF SERVICE TO BUTTERFLY PAVILION. THEY ARE A CRITICAL PIECE TO UNLOCKING BUTTERFLY PAVILION'S SCIENTIFIC, EDUCATIONAL AND CONSERVATION POTENTIAL.

29,431

HOURS SERVED BY **665** VOLUNTEERS

14,571

HOURS SERVED BY ADULT VOLUNTEERS

11,102

HOURS SERVED BY INTERNS

2,976

HOURS SERVED BY TEEN VOLUNTEERS

1,432

HOURS SERVED BY ONE-TIME VOLUNTEERS

SERVICE GROUPS

BJ's Restaurant
Cummins
Danone
Elevations Credit Union
Epsilon
First Bank
Four Point Energy
IBM
Key Bank
Medtronic
Mortenson
Nielson
Project Helping
Sev 1 Tech
Spartan College
Thornton Youth Core
UFG Insurance
University of
Colorado Technical
Communication and
Design Class
Vail Resorts
Verizon Wireless
Wells Fargo

3,000+ Hours

Steve Chady
Gary Gagnon
Ernest Merkel
David Sherman
Patricia Tennant

2,000 - 2,999 Hours

Cathy Fennelly
Virginia Hokenson
Richard Jarboe
Lora Kreutzer
Mike Sipes

1,000 - 1,999 Hours

Laura Breland
Janet Dills-Eve
Eli Esparza
Lori Harrison
Rita Lehocky
Vickie Marra
Fred Nadel
Rebecca Otey
Cheryl Patrick
Andrea Shelby
John Shofner
Jared Shorma
Pat Spetz
Frances Watson
Kelly Wisniewski
Sherri Zufall

500 - 999 Hours

Barry Anderson
Catie Barber
Daniel Barcelon
Barbara Brussell
Virginia Cellars
Alisa Chaisitti
Spencer Culbertson
Gregory Gonzales
Ruth Graham
Byron Hokenson
Roger Hollister
Kao Kupadakvinij
Anita Liuzzi
Jonnene McFarland
Steven Peck
Rita Pirkel
Sherry Rubinstein
Jennifer Sutherland
Marty Sweeney
Terri Williamson

100-499 Hours

Nathan Aist
Jude Al-mutlaq
Khaled Aldhaferi
Blythe Alger-Meyer
Elizabeth Barbarick
Scott Barbarick
Lauren Beabout
Jean Beall
Courtney Benson
Emily Bertelson
Kiernin Biggs
Jacob Birozak
Vanessa Black
Sarra Bowen
Jacob Capps
Kathy Cecil
Elizabeth Cheadle
Peter Conti
Briana Cordova
Anne Culbertson
Tara Dedolph
Wendy Elliott
Avani Fachon
Christina Finocchiaro
Armando Garcia
Gabriella Garcia
Ainsley Gilbard
Kyle Gilmore
Chris Graff
Jonathan Gragg
Christopher Greidanus
Allison Hamm
Lauren Hatch
Shushila Heath
Leslie Hendrikson
Kristin Hennig
Helen Honeyman
Shannon Jayne
Romin Jones
Brittney Karl
Sabrina Kershman

Demi Kirk
Katie Koehl
Matt Kopala
John Kowalski
Maddy Krohn
Efrain Leal Escalera
Lorrie Leshner
Rebecca Magill
Lorraine Martinez
Selena Mayer
David Mayns
Norma McGraw
Justin Mehrer
Sam Merwin
Arianna Montoya-Garcia
Jeanne Morrissey
Crystal Muas
Isiah Newbins
Laura Nguyen
Meili Novachek
Victoria O'Neil
Lydiana Pelletier
Maureen Phillips
Ethan Powers
Jeanne Puerta
Anushka Puntambekar
Noah Randall
Mikayla Riley
Emma Robinson
Madison Rode
Kandace Russell
Lindsey Sarazen
Susan Schmelzer
Skylar Schutter
Chris Scott
Sangati Shah
Beverly Shaver
Elizabeth Shelley
Larry Simmons
Samantha Stovall
Dale Swenarton
Kalousek

Michelle Swindle
Eden Takele
Kathryn Theesfeld
Elizabeth Thompson
Charlie Throckmorton
Rachael Triplett
Elizabeth Tuan
Alexandra Vialpando
Jacklyn Watson
Vivian Wedgeworth
Marie Wellhoff
Oksanna Wildrick
Bronte Wilhelm
Hope Wilson
Alexandra Witonsky
Brynn Wooten
Aimee Yan
Lexi Young
Tobias Ziemke

0-99 Hours

M Cannon
Kristin Bailey
Alex Baum
Hailey Bockholt
Audie Brinkmeier
Jennifer Brown
Gayle Cajka
Jennifer Campos
Tracey Cantrell
Amanda Carlson
Kailey Carr
Isaac Carroll
Vivian Che
Catherine Christensen
Lennon Cisneros
Joy Clay
Tim Cuevas
Jennifer Culbert
Kristin Culbert
Lily Cunis
Becca Decker

Frank DeFiore
Loli Del Olmo
Krystal Dineen
Tananya Duarte
Axel Foor
Danielle Fuller
Juliet Garcia
Michael Gonzales
Aimee Graeber
Sarah Grande
Kathleen Greeson
Lily Gregorius
Katherine Gustafson
Luke Gustafson
Samantha Hagen
Naomi Hata
Heather Hodge
Renata Holubek
Deb Hyman
Lisa Jacobs
Jessica Johnson
Adriana Juarez
Ada Kakatsakis
Muhammad Khan
Sarada Krishnan
Wenjuan Liao
John Lillquist
Molly Longaker
Nancy Luthy
Aidan McCarthy
Kaitlin McDonnell
Chris McElrath
Riley McLaughlin
Mark McMullen-
Bushman
Paul Meaney
Kevin Medina
Kellen Merrigan
Marissa Metz
Spensley Miller
Cruz Miranda
Mary Morpew
Debbie Otterstrom

Halie Padilla
Terrance Parks
Brenda Parolini
Fatima Pasha
Ryan Paul
Kristen Pearson
Arlo Pelegrin
Kaya Poppick
Olivia Porta
Emily Post
Andy Proctor
Jeslin Provost
Lindsay Purifoy
Laura Rea
Bylinda Rockson
Caroline Rogers
Cortney Ryan
Tara Saley
Tonya Salter
Janis Samuelson
Tamera Sandvold
Emmanuel Santa-
Martinez
Alison Schulte
Carolyn Seith
Shubham Sharma
Emily Singer
Benjamin Stock
Katie Suttle
Peyton Tajchman
Chantell Taylor
Katherine Theisen
Angela Trenkle
Martha Turner
Jacob Villalobos
Kylee Wallace
Danika Ward
Jacqueline Wells
Taylor West
Troy Williams
Tom Wilson
Joshua Wise
Peter Zerbe



SERVICE ENTERPRISE

In 2018, Butterfly Pavilion achieved certification as a Service Enterprise by Points of Light, the world's largest organization dedicated to volunteer service. The accompanying training provided Butterfly Pavilion with tools to strategically leverage volunteers, helping the organization become more adaptable, sustainable and scalable.

2018 FINANCIALS

IN 2018, BUTTERFLY PAVILION REMADE THE ORGANIZATION WITH NEW INFRASTRUCTURE, EMERGING WITH A NEW BRAND IDENTITY THAT CAPTURES THE INEXTRICABLE LINK BETWEEN HUMANS AND INVERTEBRATES AND A RENEWED EMPHASIS ON ITS CORE COMPETENCIES – SERVING THE WORLDWIDE COMMUNITY AS THE PREEMINENT LOCAL, NATIONAL AND GLOBAL HUB FOR INVERTEBRATE KNOWLEDGE, CONSERVATION, INSPIRATION AND CONNECTION.

338,499 Guests served through onsite & outreach programs

1,109

Adults served through programs that appeal to the lifelong learner in all of us

654

Children enjoyed Butterfly Pavilion camps about bugs, plants, marine life and more

55,101

Attendees served at our 1,853 free, classroom-based “Spineless Spotlight” programs providing every visitor with the opportunity to interact with leaders in environmental education

ASSETS:	2018
Cash and cash equivalents	712,978
Certificates of deposit	38,348
Contributions receivable	148,548
Accounts receivable	26,341
Prepaid expenses	3,660
Inventory	158,221
Beneficial interest in assets held in endowment	131,862
Property and equipment:	
Building and improvements	4,416,216
Grounds and improvements	1,677,679
Furnishings and equipment	830,005
Computer equipment and software	499,442
Exhibits and artwork	624,334
Construction in progress	268,531
	<u>8,316,207</u>
Less accumulated depreciation and amortization	4,786,314
Net property and equipment	3,529,893
Total assets	\$4,749,851

LIABILITIES AND NET ASSETS:	2018
Accounts payable and accrued expenses	237,410
Deferred revenue and memberships	218,851
Line of credit	0
Bond payable	985,000
Total liabilities	1,441,261
Net assets:	
Unrestricted	2,715,699
Temporarily restricted	461,029
Permanently restricted	131,862
Total net assets	3,308,590
Commitments	
Total liabilities and net assets	4,749,851

REVENUE AND SUPPORT:	Unrestricted	Temporarily Restricted	Permanently Restricted	Total
Admission fees	1,807,326	0	0	1,807,326
Memberships	276,268	0	0	276,268
Educational program fees	225,080	0	0	225,080
Outreach and private event fees	240,388	0	0	240,388
Gift shop and concession operations:				
Gross sales	878,670	0	0	878,670
Less cost of sales	-348,848	0	0	-348,848
Contributions	179,736	546,173	0	725,909
In-kind contributions	100,826	0	0	100,826
Scientific and Cultural Facilities District Support	846,845	0	0	846,845
Special event income	85,344	0	0	85,344
Less direct expenses	-6,972	0	0	-6,972
Investment return	829	-8,433	0	-7604
Other income	58,626	0	0	58,626
Net assets released from restrictions	351,934	-346,538	-5,396	0
Total revenue and support	4,696,052	185,806	-5,396	4,881,858

EXPENSES:				
Program services:				
Invertebrate zoo and research	1,791,849	0	0	1,791,849
Guest experience	1,058,493	0	0	1,058,493
Education	530,821	0	0	530,821
Total program services	-3,381,163	0	0	-3,381,163
Supporting services:				
Management and general	536,066	0	0	536,066
Marketing	276,222	0	0	276,222
Membership development	68,930	0	0	68,930
Fund raising	346,239	0	0	346,239
Total supporting services	1,227,457	0	0	1,227,457
Total expenses	4,608,620	0	0	4,608,620
Change in net assets	87,432	185,806	0	273,238
Net assets at beginning of year	2,628,267	407,085	0	3,035,352
Net assets at end of year	2,715,699	592,891	0	3,308,590



DONORS

We are grateful for all who made philanthropic gifts in 2018 in support of Butterfly Pavilion's mission and vision. Donations help to educate the public about the need to protect and care for threatened habitats globally and to support vital research for invertebrate conservation. Our donors are truly heroes to the world's tiny giants. Thank you!

\$25,000 +

Anonymous (2)
Karen and Garrett Baum
Extraction Oil and Gas
HBB Foundation
Kevamra, LLC
Molly and Taylor Kirkpatrick
McWHINNEY

\$10,000 - \$24,999

Andeavor Foundation
Anonymous
The Anschutz Foundation
Association of Zoological Horticulture

Mary Lynn and Fred Bangs
The Bangs Family Fund of
The Catholic Foundation
Bobolink Foundation
James Brownlie
Harvey Family Foundation
Loewy Family Fund at The Denver Foundation
Rice's Lucky Clover Honey
Trust for Mutual Understanding
Xcel Energy Foundation

\$5,000 - \$9,999

Children's Hospital Colorado
Community Foundation
Serving Boulder County

The Elephant Fund at
the Community Foundation
Serving Boulder County
Elevations Credit Union
Jena and Kevin Hausmann
Joan and Richard Jarboe
Jax Mercantile CO
M.A. Mortenson Company
Terry and Patrick Tennyson
Schlessman Family Foundation
Katie and Scott Schoelzel
Schoelzel Family Foundation
Lisa and Stephen Storey
Marije TerEllen

Verizon Wireless Foundation
Virginia W. Hill Foundation

\$1,000 - 4,999

Ameriprise Financial, Inc.
John Beeble
Travis Berry
Blue Federal Credit Union Foundation
Boulder County Nature Association
Broomfield Community Foundation
Ellie Caulkins
Caulkins Family Foundation
City and County of Broomfield –
Broomfield Cultural Council
City of Westminster

Colorado Tree Coalition
Jennifer and Joel Cox
Davis Graham & Stubbs, LLP
Spencer Fane LLP
Sandra and Reid Figel
Sarah Glaser
Lisa and Campbell Hough
Hyland Hills Park & Recreation District
Intrepid
Bryce Kelley
KeyBank Foundation
Cindy Mueller and Rick Kron
Ned Lidvall
Ian MacGregor
Kenneth Monfort

Nancy and Randy Morgan
Deborah and Jeffrey Obermeyer
Rob O'Dea
Kellie and Andrew Rowan
SCC Scientific & Cultural Collaborative
Lindsay and Chad Schneider
Tisha and Brian Schuller
Mr. and Mrs. Michael Snider
Spallone Family Fund at Broomfield
Community Foundation
Kevin Standbridge
Sunflower Bank
Dan Swenson
Tappan Foundation
Tolin Mechanical

\$1,000 - 4,999 (cont'd)

United Power
Vista Management Associates
Dave Weidner and Sue Thompson
William H. Anderson Foundation
Terry and Steve Woods
Zimmer Cox Commercial Builders

Mary Ann Colley
John Dobie
Hunter Douglas
Carolyn and Chris Gdowski
Jennifer Grathwohl
Stan Jezierski
Sarada Krishnan
Cora LaPlante
National Charity Services
John Parker
Marlene and Mark Pino
Sheila Powers-Wright
Melanie Raulerson
Lauren McCain and Rich Reading
Jo and Martin Semple

Amanda Smith
Linda Denmark Strachan
Katherine and Ben Vagher
Bobbi Walsh
Wenk Associates Inc.
David R West
Xcel Energy
Nancee Yahrting
Casey and Adam Yancey

\$100 - \$499

Allied Integrated Marketing
Anonymous
Katherine Ashton
Brian Batz

Nikki Beeble
Katherine Bermingham
Roger Bigelow
Broomfield Open Space Foundation
Margaret Brown
Steven Buskirk
CapitalValue Advisors
City of Boulder
Savinay Chandrasekhar
The Geraldine R. Cohen Trust
Reid and Savita Collier
James Collins
Kathleen Collins
Community First Foundation
Michele and John Conklin

Elizabeth J Conover
Kenzie Crowe
Delta Dental of Colorado
Jeff Dreps
Richard Edwards
Brian Eley
Traci Ertle
Dave Espinosa
Megan and Stuart Fehr
Ken Ferretti
Jane Frederick
Garden Club of Denver
Niko Gonzales
Google
Granite Seed & Erosion Control

Nour Halabi
Kent Hansen
Bonnie Helgeson
Maureen Hewitt
Scott Hoke
Virginia and Byron Hokenson
HWA Wildlife Consulting
Alexa Johnston
Jeff Kraus
Mary and Richard Lane
Aaron Lau
Aubrey Lavizzo
Linda A. Leadbetter
Beth Leuchten
Greg Litus





\$100 - \$499 (cont'd)

Lockstep Mortgage LLC
Kelly Diehl MacKean
John Mastro
Sadie and Charles McKay
Tom McKinnon
Almira Moronne
Christiana Nelson
Brenda Peacock
Allan Pelkonen
Audrey Purdue
Jessica Purdy
Patricia Rawlings
Matthew Redmond
Rosemary Rochford
Sand Creek Regional Greenway Partnership
Jessica and Jeremy Schwartz
Lauri Shaw
Matt Shawaker
Lynne and Vassilios Sirpolaidis
Lyle Stewart
Scott Stewart
Margo Stoney
Cindy Strong and Marty St. Clair
SunRun Inc.
Sweet Bee Sisters
Alexander Thome
Mary Anne and Travis Thornton
Susan Townsend

Marinda and Robert Trout
Sheila M. Walker
Westminster Mile High Karate
Cynthia Williamson
Kellen Wittkop
Mikenna Wolff

Tributes and Memorials

Thomas Stephens
in honor of Portia Hattig
Trudy Welty
in honor of Merilee Lucken
Daniel Ziskin
in honor of Rich Reading
Terry Richey and Nancy Pope
in honor of Tess Richey
Anonymous
in honor of Patrick Tennyson
James Fedalen
in memory of Charles Davies
Myra and Peter Schwartz
in memory of Shirley Glick
Rebecca Koch
in memory of Ron Koch
In memory of Lauren Gibson
Steve and Karyn Gibson
ZOLL
Longmont Employee Assistance Program
Family Eyecare of Brighton
Marianne Bixler
In memory of Mary Gonzalez
John R. Kriete
Patricia A. Martin

EXECUTIVE STAFF

Patrick Tennyson
President and CEO
Brenda Kaser-Burger
Chief Operating Officer
Mary Ann Colley
VP of Science and Conservation

Kathy Collins
Vice President of Finance
C. Parker McMullen-Bushman
VP of Programs, Interpretation and Education
Russ Pecoraro
VP of Marketing and Communications

BOARD OF DIRECTORS

Rob O'Dea
Chair
Lisa Hough
Vice Chair
Jordan Alvillar
Secretary
Damon Barry
Member
Garrett Baum
Member
Travis Berry
Member

Joel Cox
Member
David DeMott
Member
Rich Jarboe
Member
Ian MacGregor
Member
Dane McDonald
Member
Kenneth Monfort
Member

Andrew Rowan
Member
Chad Schneider
Treasurer
Tisha Schuller
Member
Michael Snider
Member
Faith Winter
Member
Bob Briggs
Member Emeritus





**BUTTERFLY
PAVILION**

6252 W. 104th Avenue
Westminster, CO 80020