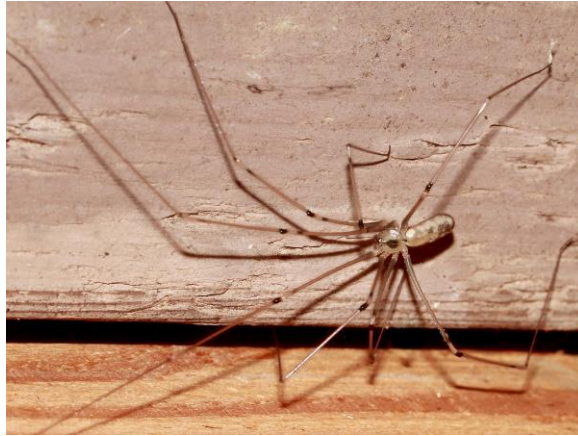




BUTTERFLY PAVILION

Cellar Spider (*Pholcus phalangioides*)



Countries: Around the world.

Habitat: Common throughout the world and can be found in undisturbed, low light locations such as basements, under stones, under ledges, and in caves.

Diet: Seems to prefer other spiders and small insects. Males and females have been known to engage in cannibalism.

Predators: Birds

Behavior: When this species is not mating, it is a solitary creature that works on catching food in its web.

Lifespan: Up to three years

Growth and Development: The mother watches over her newly hatched young for about nine days until they shed their skins to become little spiders. They then leave the maternal web and go look for a place to build their own webs.

Endangered Status: IUCN- No special status; CITES- No special status

Fun Fact: Often confused with the Harvestmen daddy long legs spider, which is a separate species and not even a true spider.